

greenville

PLANTERS



FEATURING:

COSAPOTS
ARCHITECT-DESIGNED ELEGANCE



handmade



very strong



frost resistant



designed by architects



durable



extra high rim



raised bottom

COSAPOTS

ARCHITECT-DESIGNED ELEGANCE

Inspiration is everywhere. On every corner. In every street. Shapes. Materials. Patterns. Our architects use this inspiration to design our unique Cosapots Collection; handcrafted excellence in large size planters. Designed for impact, built to last.

Cosapots is a high end brand in planter pots, where perfection and care are key considerations. All Cosapots are designed by architects and constructed by highly skilled craftsmen. Every piece takes about 3 to 7 days to finish and are 100% handmade.

Cosapots are made from the best polyesters combined with high quality fibreglass. The natural stone look is achieved by mixing carefully selected high quality materials and natural colorants.

THE DESIGN

Visual effect

thanks to the inward rim, there is an extra dimension to the appearance of the plant or tree

Structural solidity

The high inward rim makes the pot very strong

Strong, frost resistant and impermeable

Thanks to the Cohesa material (Cohesa is made of the best quality polyester, fiber glass and natural additives)

Raised bottom

So excess water can flow away underneath the pot.

Easy to repot

thanks to unique thin rim

Natural look

made by hand + easy to move thanks to the lightweight Cohesa material

Waterproof

(Hole to be drilled by end user)





UNIQUE STRENGTH

Extra high inward rim for strength

Reinforcements to add extra strength to the body

Reinforcements to avoid bowing of the walls

Up to 7 layers of resin and fibreglass depending on the size of the pot



TIMELESS COLOURS



Brown stone

**Available*



Concrete stone

**Available*



White stone

**Available*



Grey stone

**Available*



River stone

**Long lead time*



Taupe stone

**Long lead time*

Mondo *Available

The Mondo Round Planter is a symbol of refined grace and versatility in the Cosapots Collection. Exemplifying meticulous craftsmanship and unwavering quality, this planter radiates a formal sophistication that transforms any space into an elevated botanical haven.

Choose MONDO to stand alone or combine different sizes to create a MONDO family into a unique project.



Mondo Taupe stone



Mondo Brown stone



Size	Brown stone	Concrete stone	White stone	Grey stone	River stone	Taupe stone
Ø 19.7 x H 18.5 in Ø 50 x H 47 cm	MO.50.BR	MO.50.CO	MO.50.WH	MO.50.GR	MO.50.RI	MO.50.TA
Ø 26.0 x H 24.0 in Ø 66 x H 61 cm	MO.66.BR	MO.66.CO	MO.66.WH	MO.66.GR	MO.66.RI	MO.66.TA
Ø 33.1 x H 30.7 in Ø 84 x H 78 cm	MO.84.BR	MO.84.CO	MO.84.WH	MO.84.GR	MO.84.RI	MO.84.TA
Ø 39.4 x H 39.4 in Ø 100 x H 100 cm	MO.100.BR	MO.100.CO	MO.100.WH	MO.100.GR	MO.100.RI	MO.100.TA

Mondo high *Available

The high series has been created to join the MONDO family to compliment halls and stairways, smaller areas, and interior spaces.

Its exceptional height not only adds a commanding presence but also provides ample space for a variety of plants, making it an ideal choice for both indoor and outdoor settings.

Choose one size fits all or combine sizes , the MONDO family will always be right.



Mondo high Taupe stone



Mondo high Grey stone



Size	Brown stone	Concrete stone	White stone	Grey stone	River stone	Taupe stone
Ø 17.7 x H 30.7 in Ø 45 x H 78 cm	MOh.45.BR	MOh.45.CO	MOh.45.WH	MOh.45.GR	MOh.45.RI	MOh.45.TA
Ø 21.7 x H 35.4 in Ø 55 x H 90 cm	MOh.55.BR	MOh.55.CO	MOh.55.WH	MOh.55.GR	MOh.55.RI	MOh.55.TA



Opulo River stone

Opulo *Long lead time

The Opulo conveys a sense of opulence and luxury to the Cosapots Collection. It comes with a timeless curvature.

OPULO deserves beautiful trees or impressive plants to bring projects alive. Colours and sizes can endlessly be mixed and matched.



Opulo Concrete stone



Size	Brown stone	Concrete stone	White stone	Grey stone	River stone	Taupe stone
Ø 21.7 x H 17.7 in Ø 55 x H 45 cm	OP.55.BR	OP.55.CO	OP.55.WH	OP.55.GR	OP.55.RI	OP.55.TA
Ø 29.5 x H 25.6 in Ø 75 x H 65 cm	OP.75.BR	OP.75.CO	OP.75.WH	OP.75.GR	OP.75.RI	OP.75.TA
Ø 39.4 x H 37.4 in Ø 100 x H 95 cm	OP.100.BR	OP.100.CO	OP.100.WH	OP.100.GR	OP.100.RI	OP.100.TA

ROCO *Long lead time

Low and wide, round and bold, remaining very elegant and gentle.

ROCO is one of our Supermodels. An evergreen design. Timeless and vibrant. Signature curves have been well balanced with its proportions.

The Cosapot ROCO textured finishes are designed to blend with any high end architectural style.



Roco Taupe stone



Brown stone



Concrete stone



White stone



Grey stone



River stone



Taupe stone

Size

Ø 24.4 x H 13.0 in
Ø 62 x H 33 cm

RO.62.BR

RO.62.CO

RO.62.WH

RO.62.GR

RO.62.RI

RO.62.TA

Ø 36.6 x H 19.3 in
Ø 93 x H 49 cm

RO.93.BR

RO.93.CO

RO.93.WH

RO.93.GR

RO.93.RI

RO.93.TA

Ø 49.2 x H 26.0 in
Ø 125 x H 66 cm

RO.125.BR

RO.125.CO

RO.125.WH

RO.125.GR

RO.125.RI

RO.125.TA

Roco Grey stone

Juno *Long lead time

From Roman mythology, JUNO was the Queen of Gods! Powerful yet elegant. A well-respected creature.

JUNO shares its rim design with the complete COSAPOTS lineup as a signature of strength and purity. The family represents our archetype shape of rich simplicity.

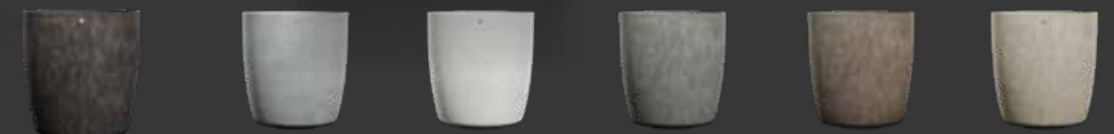
Our designs are very strong, stable and engineered to fit with the world's most beautiful indoor and outdoor plants.



Juno Grey stone



Juno Concrete stone



Size	Brown stone	Concrete stone	White stone	Greys tone	River stone	Taupe stone
Ø 23.6 x H 25.6 in Ø 60 x H 65 cm	JU.60.BR	JU.60.CO	JU.60.WH	JU.60.GR	JU.60.RI	JU.60.TA
Ø 27.6 x H 29.9 in Ø 70 x H 76 cm	JU.70.BR	JU.70.CO	JU.70.WH	JU.70.GR	JU.70.RI	JU.70.TA
Ø 33.5 x H 36.2 in Ø 85 x H 92 cm	JU.85.BR	JU.85.CO	JU.85.WH	JU.85.GR	JU.85.RI	JU.85.TA
Ø 37.4 x H 40.2 in Ø 95 x H 102 cm	JU.95.BR	JU.95.CO	JU.95.WH	JU.95.GR	JU.95.RI	JU.95.TA
Ø 41.3 x H 44.1 in Ø 105 x H 112 cm	JU.105.BR	JU.105.CO	JU.105.WH	JU.105.GR	JU.105.RI	JU.105.TA



Lofto Taupe stone

Lofto *Available

Imposing in its height to strengthen architectural projects, LOFTO comes in a multitude of enhancing sizes.

Whether you prefer a classic or contemporary look, the Lofto Planter caters to diverse preferences while maintaining its exceptional quality and durability.

An assortment of high planters can be used to create an informal area or can convey a more formal feel when a repeated single size lines an area.



Lofto Brown stone



Size	Brown stone	Concrete stone	White stone	Grey stone	River stone	Taupe stone
Ø 14.6 x H 30.3 in Ø 37 x H 77 cm	LO.37.BR	LO.37.CO	LO.37.WH	LO.37.GR	LO.37.RI	LO.37.TA
Ø 16.5 x H 36.2 in Ø 42 x H 92 cm	LO.42.BR	LO.42.CO	LO.42.WH	LO.42.GR	LO.42.RI	LO.42.TA
Ø 19.7 x H 43.3 in Ø 50 x H 110 cm	LO.50.BR	LO.50.CO	LO.50.WH	LO.50.GR	LO.50.RI	LO.50.TA



Lupe Concrete stone

Lupo *Available / Long lead time

Our solitary LUPO stands for independence and strength. A sleek design that adds a dash of chic to decorate aisles, terraces and venues with style.

Trees, ornamental plants, and beautiful flowers transform LUPO projects into the next level with eclectic vibes.



Lupo River stone



Size		Brown stone	Concrete stone	White stone	Grey stone	River stone	Taupe stone
Ø 20.1 x H 15.4 in Ø 51 x H 39 cm	*A	LU.51.BR	LU.51.CO	LU.51.WH	LU.51.GR	LU.51.RI	LU.51.TA
Ø 24.4 x H 18.9 in Ø 62 x H 48 cm	*A	LU.62.BR	LU.62.CO	LU.62.WH	LU.62.GR	LU.62.RI	LU.62.TA
Ø 32.3 x H 24.8 in Ø 82 x H 63 cm	*A	LU.82.BR	LU.82.CO	LU.82.WH	LU.82.GR	LU.82.RI	LU.82.TA
Ø 37.4 x H 28.3 in Ø 95 x H 72 cm	*A	LU.95.BR	LU.95.CO	LU.95.WH	LU.95.GR	LU.95.RI	LU.95.TA
Ø 47.2 x H 35.8 in Ø 120 x H 91 cm	*LLT	LU.120.BR	LU.120.CO	LU.120.WH	LU.120.GR	LU.120.RI	LU.120.TA



Cavo White stone

Cavo *Long lead time

Wide and low. Our shell collection CAVO is designed to enhance perspective. This simple sculpture is unassuming and serves as a touch of elegance to many settings.

Our size variety are well balanced to stand alone when desired or to stand together as a vibrant family.



Cavo Concrete stone



Size	Brown stone	Concrete stone	White stone	Grey stone	River stone	Taupe stone
Ø 19.7 x H 7.9 in Ø 50 x H 20 cm	CA.50.BR	CA.50.CO	CA.50.WH	CA.50.GR	CA.50.RI	CA.50.TA
Ø 31.5 x H 9.9 in Ø 80 x H 25 cm	CA.80.BR	CA.80.CO	CA.80.WH	CA.80.GR	CA.80.RI	CA.80.TA
Ø 43.3 x H 11.8 in Ø 110 x H 30 cm	CA.110.BR	CA.110.CO	CA.110.WH	CA.110.GR	CA.110.RI	CA.110.TA



Orbo Taupe stone

Orbo *Available

The Orbo Planter's standout feature is its eye-catching spherical design, bringing a modern and chic vibe to any space. Built for strength and reliability, it is frost-resistant and impermeable, minus the bulk of traditional materials, making it adaptable to diverse environmental conditions.

While one ORBO will make the difference, many ORBOs will never be too exaggerated. The assortment of sizes are designed to compliment one another in a multiple planter setting.



Orbo Concrete stone



Brown stone



Concrete stone



White stone



Grey stone



River stone



Taupe stone

Size	Brown stone	Concrete stone	White stone	Grey stone	River stone	Taupe stone
Ø 23.6 x H 20.5 in Ø 60 x H 52 cm	OR.60.BR	OR.60.CO	OR.60.WH	OR.60.GR	OR.60.RI	OR.60.TA
Ø 29.5 x H 25.6 in Ø 75 x H 65 cm	OR.75.BR	OR.75.CO	OR.75.WH	OR.75.GR	OR.75.RI	OR.75.TA
Ø 35.4 x H 30.7 in Ø 90 x H 78 cm	OR.90.BR	OR.90.CO	OR.90.WH	OR.90.GR	OR.90.RI	OR.90.TA



Keggo Brown stone

Keggo *Long lead time

Keggo has a grand presence. It is our most recent silhouette, and it brings a new dynamic while remaining very elegant and serene.

Basic in form, versatile in placement, from filling a corner to lining a walkway.



Keggo Grey stone



Brown stone



Concrete stone



White stone



Grey stone



River stone



Taupe stone

Size

Ø 19.7 x H 18.1 in
Ø 50 x H 46 cm

KE.50.BR

KE.50.CO

KE.50.WH

KE.50.GR

KE.50.RI

KE.50.TA

Ø 23.6 x H 21.7 in
Ø 60 x H 55 cm

KE.60.BR

KE.60.CO

KE.60.WH

KE.60.GR

KE.60.RI

KE.60.TA

Ø 27.6 x H 23.6 in
Ø 70 x H 60 cm

KE.70.BR

KE.70.CO

KE.70.WH

KE.70.GR

KE.70.RI

KE.70.TA

Ø 31.5 x H 27.2 in
Ø 80 x H 69 cm

KE.80.BR

KE.80.CO

KE.80.WH

KE.80.GR

KE.80.RI

KE.80.TA



Reglo Brown stone

Reglo *Available

A contemporary masterpiece in the Cosapots Collection that effortlessly merges sleek design with unmatched practicality. Immerse yourself in the world of sophisticated gardening with this handcrafted planter, meticulously fashioned using top-quality resins and premium fiberglass to ensure enduring strength and resilience.

This planter not only exemplifies durability but also introduces a touch of natural allure to your surroundings, contributing to the overall aesthetics of your space.

Its thoughtfully crafted structure provides the perfect balance between functionality and contemporary elegance.



Reglo Concret stone



Size	Brown stone	Concrete stone	White stone	Grey stone	River stone	Taupe stone
11.8 x 11.8 x H 31.5 in 30 x 30 x H 80 cm	RE.30.BR	RE.30.CO	RE.30.WH	RE.30.GR	RE.30.RI	RE.30.TA
23.6 x 11.8 x H 31.5 in 60 x 30 x H 80 cm	RE.60.BR	RE.60.CO	RE.60.WH	RE.60.GR	RE.60.RI	RE.60.TA
35.4 x 11.8 x H 31.5 in 90 x 30 x H 80 cm	RE.90.BR	RE.90.CO	RE.90.WH	RE.90.GR	RE.90.RI	RE.90.TA
35.4 x 11.8 x H 15.7 in 90 x 30 x H 40 cm	RE.40.BR	RE.40.CO	RE.40.WH	RE.40.GR	RE.40.RI	RE.40.TA



Reglito Taupe stone

Reglito *Available

Designed for versatility, the Reglito Square Planter is the perfect solution for optimizing smaller spaces without compromising on style. Its smaller dimensions make it an ideal choice for those seeking a touch of contemporary elegance in more confined environments.

The brothers, REGLO and REGLITO offer tons of stunning combinations.

Together they can truly make a statement.



Reglito Grey stone

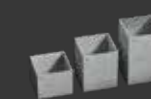
Size

19.7 x 19.7 x H 31.5 in
50 x 50 x H 80 cm



Brownstone

REI.80.BR



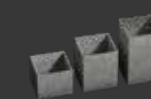
Concrete stone

REI.80.CO



Whitestone

REI.80.WH



Greystone

REI.80.GR



Riverstone

REI.80.RI



Taupestone

REI.80.TA

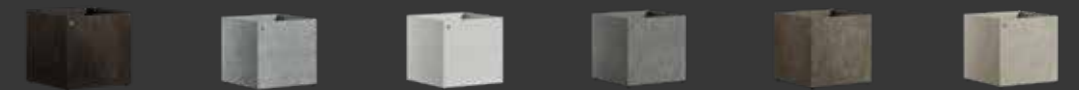
Reglito Cube *Available



Reglito Cube Taupe stone



Reglito Cubes Greystone



Size	Brownstone	Concrete stone	Whitestone	Greystone	Riverstone	Taupestone
19.7 x 19.7 x H 19.7 in 50 x 50 x H 50 cm	REIC.50.BR	REIC.50.CO	REIC.50.WH	REIC.50.GR	REIC.50.RI	REIC.50.TA
23.6 x 23.6 x H 23.6 in 60 x 60 x H 60 cm	REIC.60.BR	REIC.60.CO	REIC.60.WH	REIC.60.GR	REIC.60.RI	REIC.60.TA
27.6 x 27.6 x H 27.6 in 70 x 70 x H 70 cm	REIC.70.BR	REIC.70.CO	REIC.70.WH	REIC.70.GR	REIC.70.RI	REIC.70.TA
31.5 x 31.5 x H 31.5 in 80 x 80 x H 80 cm	REIC.80.BR	REIC.80.CO	REIC.80.WH	REIC.80.GR	REIC.80.RI	REIC.80.TA
35.4 x 35.4 x H 35.4 in 90 x 90 x H 90 cm	REIC.90.BR	REIC.90.CO	REIC.90.WH	REIC.90.GR	REIC.90.RI	REIC.90.TA
39.4 x 39.4 x H 39.4 in 100 x 100 x H 100 cm	REIC.100.BR	REIC.100.CO	REIC.100.WH	REIC.100.GR	REIC.100.RI	REIC.100.TA

Semplo *Long lead time

SEMPLO is a stunning square planter. Strength and reliability were the focus while designing the SEMPLO. It's square shape gives it the ability to be perfectly paired with higher or lower variants or even the REGLO family.

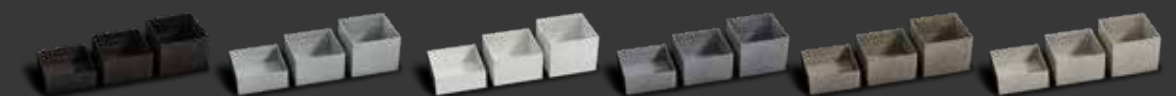
Upgrade your space now with either of these two planters and make a statement.



Semplo Concrete stone



Semplo River stone



Size	Brown stone	Concrete stone	White stone	Grey stone	River stone	Taupe stone
39.4 x 39.4 x H 15.7 in 100 x 100 x H 40 cm	SE.40.BR	SE.40.CO	SE.40.WH	SE.40.GR	SE.40.RI	SE.40.TA
39.4 x 39.4 x H 23.6 in 100 x 100 x H 60 cm	SE.60.BR	SE.60.CO	SE.60.WH	SE.60.GR	SE.60.RI	SE.60.TA
39.4 x 39.4 x H 31.5 in 100 x 100 x H 80 cm	SE.80.BR	SE.80.CO	SE.80.WH	SE.80.GR	SE.80.RI	SE.80.TA



Semplo grand Brown stone

Semplo grand *Long lead time

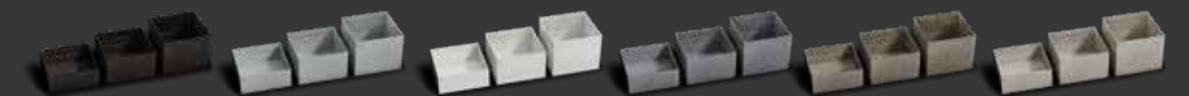
SEMPLO grand is our longer variation of the SEMPLO square planter. This extra wide planter series covers a lot of ground.

It's square shape gives it the ability to be perfectly paired with higher or lower variants or even the Reglo family.

Add a touch of elegance to your upscale space.



Semplo grand white stone



Size	Brown stone	Concrete stone	White stone	Grey stone	River stone	Taupe stone
47.2 x 47.2 x H 23.6 in 120 x 120 x H 60 cm	SEg.60.BR	SEg.60.CO	SEg.60.WH	SEg.60.GR	SEg.60.RI	SEg.60.TA
47.2 x 47.2 x H 31.5 in 120 x 120 x H 80 cm	SEg.80.BR	SEg.80.CO	SEg.80.WH	SEg.80.GR	SEg.80.RI	SEg.80.TA
47.2 x 47.2 x H 39.4 in 120 x 120 x H 100 cm	SEg.100.BR	SEg.100.CO	SEg.100.WH	SEg.100.GR	SEg.100.RI	SEg.100.TA



Semplito minor River stone

Semplo minor *Long lead time

SEMPLO minor takes our square footprint planters down in size a notch but still delivers on the look when square is what is called for.

Uncover elegance that shouts sophistication in a whisper.



Semplito minor Concrete stone



Size	Brown stone	Concrete stone	White stone	Grey stone	River stone	Taupe stone
31.5 x 31.5 x H 15.7 in 80 x 80 x H 40 cm	SEm.40.BR	SEm.40.CO	SEm.40.WH	SEm.40.GR	SEm.40.RI	SEm.40.TA
31.5 x 31.5 x H 23.6 in 80 x 80 x H 60 cm	SEm.60.BR	SEm.60.CO	SEm.60.WH	SEm.60.GR	SEm.60.RI	SEm.60.TA



Semplo feet *Long lead time

SEMPLO feet is a unique square planter Perfect for an outdoor streetscape.

It's square shape gives it the ability to be perfectly paired with higher or lower variants or even the Reglo family.

Beautify your cityscape.



Semplo feet River stone



Size	Brown stone	Concrete stone	White stone	Grey stone	River stone	Taupe stone
39.4 x 39.4 x H 19.7 in 100 x 100 x H 50 cm	SEf.50.BR	SEf.50.CO	SEf.50.WH	SEf.50.GR	SEf.50.RI	SEf.50.TA
39.4 x 39.4 x H 27.6 in 100 x 100 x H 70 cm	SEf.70.BR	SEf.70.CO	SEf.70.WH	SEf.70.GR	SEf.70.RI	SEf.70.TA
39.4 x 39.4 x H 35.4 in 100 x 100 x H 90 cm	SEf.90.BR	SEf.90.CO	SEf.90.WH	SEf.90.GR	SEf.90.RI	SEf.90.TA

Semplo feet Concrete stone

Semplito *Available

Designed for ease, the Simplito Planter is easy to arrange, allowing you to optimize your space for a chic and otherwise-full environment. Its modular nature lends itself ideally to combinations, enabling you to create dynamic and personalized displays. Whether styling an indoor sanctuary or an outdoor oasis, the Simplito Planter offers the flexibility to tailor your space to your unique vision.

As with the REGLO family, the SEMPLITO and SEMPLIO lends themselves ideally to combinations. A combination of the SEMPLITO and SEMPLIO offer clean and modern aesthetics.



Semplito White stone



Semplito Taupe stone

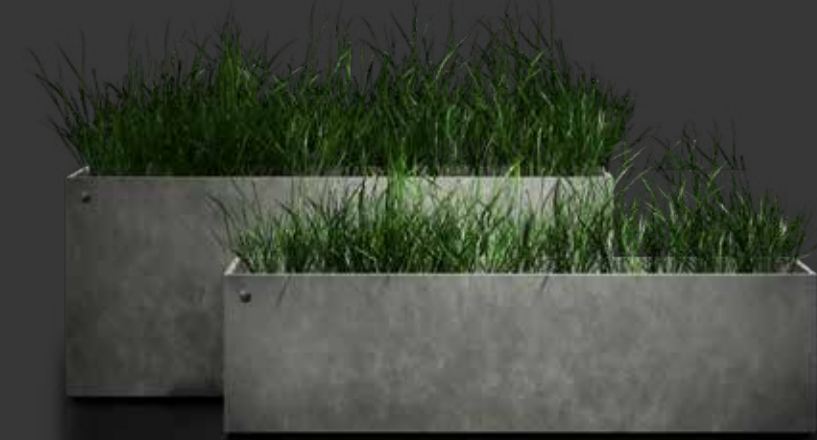


Size	Brown stone	Concrete stone	White stone	Grey stone	River stone	Taupe stone
39.4 x 19.7 x H 15.7 in 100 x 50 x H 40 cm	SEI.40.BR	SEI.40.CO	SEI.40.WH	SEI.40.GR	SEI.40.RI	SEI.40.TA
39.4 x 19.7 x H 23.6 in 100 x 50 x H 60 cm	SEI.60.BR	SEI.60.CO	SEI.60.WH	SEI.60.GR	SEI.60.RI	SEI.60.TA
39.4 x 19.7 x H 31.5 in 100 x 50 x H 80 cm	SEI.80.BR	SEI.80.CO	SEI.80.WH	SEI.80.GR	SEI.80.RI	SEI.80.TA

Semplito grand *Available

The grandeur of the SEMPLITO Planter is complemented by its wide rectangular design, creating a visually striking centerpiece for your space. Its commanding presence allows for versatile placement, enhancing the ambiance of corporate settings, upscale residences, or expansive outdoor landscapes.

With the SEMPLITO Grand Wide Rectangle Planter, make a bold statement that transforms any environment into a showcase of botanical sophistication.



Semplito grand 300 Grey stone



Size

59.1 x 19.7 x H 23.6 in
150 x 50 x H 60 cm

Brown stone

SElg.60.BR

Concrete stone

SElg.60.CO

White stone

SElg.60.WH

Grey stone

SElg.60.GR

River stone

SElg.60.RI

Taupe stone

SElg.60.TA

Semplito grand 60 White stone

Lonno *Long lead time

Lonno, is the longest link in the chain of the Cosapots collection!

Elongated elegance and sophistication.

Designed for those who appreciate both size and style, the LONNO Planter offers an impressive expanse to showcase your favorite plants. The meticulous craftsmanship ensures enduring quality, making it a standout choice for both indoor and outdoor environments.



Lonno 300 Taupe stone



Lonno 300 Concrete stone



Size	Brown stone	Concrete stone	White stone	Grey stone	River stone	Taupe stone
78.8 x 19.7 x H 23.6 in 200 x 50 x H 60 cm	LO.200.BR	LO.200.CO	LO.200.WH	LO.200.GR	LO.200.RI	LO.200.TA
118.1 x 19.7 x H 23.6 in 300 x 50 x H 60 cm	LO.300.BR	LO.300.CO	LO.300.WH	LO.300.GR	LO.300.RI	LO.300.TA

TERMS & CONDITIONS

Customer satisfaction is our priority. Our team is committed to better understanding your needs and working to exceed your expectations for quality, service and timely delivery.

Payment

- Greenville Planters does not offer terms.
- NSF cheques will incur the maximum processing fee as allowed by law.

Orders

- The order process begins with a detailed formal quote that includes colour selection, ship to and bill to addresses. The customer must confirm the quote. The quote process may be waived by the customer by request.
- All orders require a minimum 50% deposit. This will initiate the order process, reserve inventory, and place the item(s) in the finishing queue.
- An invoice, showing the deposit and balance due prior to shipping/pick-up, will be sent to the customer. An established ready-to-ship or ready-to-pickup date will be indicated along with this invoice.
- All deposits are non-refundable.
- Changes to orders must be made within twenty-four hours of order confirmation, in writing, and must include a written confirmation from Greenville, to be effective.

Backorders

- Backordered items include an estimated time of arrival (ETA) line on the sales order. The date in this line item is when the inventory is expected to arrive.
- Backorders will be filled within 7-21 days of the arrival of a shipment.
- Backorders will be shipped as available without notice.

PLANTING GUIDE

Potting soil mixture should be used in any/all planters when planting. Potting soil is specially formulated for planter and container gardening. It consists of a mixture of soil, humus, and peat, but can vary from brand to brand. To ensure you are using the correct type of potting soil for your plant(s), check with a professional to determine the correct regional and plant specific soil to be used.

Planters installed outdoors must have drainage holes. During months when temperatures are at freezing or below, water remaining in the soil or planter will freeze and expand which may cause damage to the planter. We do not recommend drainage holes on interior installations.

Our planters are designed to be used without saucers and have feet to allow for water drainage in outdoor applications.

Direct Planting:

1. Insert a layer of landscape fabric.
2. Add a layer of gravel.
 - a. Best practices:** rinse the sediment off the gravel prior to installing.
3. Insert another layer of landscape fabric.
4. Optional: use foam to build up the pot to desired height.
 - a. For commercial installations, higher altitudes, and roof decks:** consider adding more rocks (like lava rock), instead of foam, to achieve desired plant height.
5. Once desired height is achieved, insert a drop tray.
 - a. Best practices:** a grow bag can be used instead of a nursery pot. Grow bags should be the same gallon size as the nursery pot. This ensures no unnecessary air gets in the soil and roots and reduces dirty run-off and staining.
6. Once in place, use filler around the nursery pot/grow bag to stabilize your plant(s) in place.
 - a. Best practices:** we recommend rubber mulch.
7. **Optional:** top with river rock, moss or other decorative plant finisher.

SHIPPING

All products shipped from Greenville Planters are FOB Greenville's warehouse located in Mississauga, Ontario. We ship across Canada. Shipping rates are included in all of our quotes when this service is requested.

We offer customer pick-up and as well, we arrange shipping as per instructions from our customers. Shipping charges are line itemized on the invoice and passed on to the customer. Once shipping details are arranged, we will provide the details such as ETA and tracking numbers where and when available.

The transportation organizations (carriers) we use for shipping third party companies, which means that many aspects of the delivery are subject to their terms and conditions. Most of these companies are set up for commercial dock-to-dock shipping in order to provide the most economical rates. Most transportation companies do offer additional services for which they charge a supplemental fee. The additional services typically include (but are not limited to) use of tailgate, delivery appointments, residential, white glove, beyond curbside, construction site, city core, extra wait time, inside delivery, debris disposal, etc. For this reason, we will ask our customers to provide a good deal of information as to their needs and, in particular, to the receiving facilities.

Requesting additional services at the time of delivery will incur supplemental charges that become the responsibility of the customer. These charges may be higher than if the accurate delivery instructions would have been provided upon placing the order. We encourage all our customers to provide all these details prior to shipping.

Note that most shipments are wrapped and strapped on a pallet in order to facilitate and protect the shipment. It is the receiving party who is responsible to sign for the shipment and to deal with the packaging material with their own resources. Carriers will not accept or remove this packing material unless prior arrangements have been made.

Missing or Damaged Items

- Order MUST BE INSPECTED by the customer AT THE TIME OF DELIVERY. Any damaged or missing items must be reported immediately, same day, to Greenville Planters in writing to info@greenvilledesigns.com
- If the damaged shipment is accepted by the customer, damage details must be noted on the Bill of Lading that the receiver signs and gives to the transport driver.

WARRANTY

Cosapots stands by the quality of its fiberglass planters.

Each planter holds a five (5) year warranty from the time of acceptance of the product.

We warrant the initial purchaser of our products that they are of quality material and workmanship, and are free of manufacturing defects.

Cosapots, at its sole discretion, will repair, exchange or give credit for the original purchase price of any item provided to be of defective materials or workmanship.

Mishandling, misuse, abuse, failure to follow directions for use, unauthorized modifications, neglect, accidents or any other hazard to the product voids the five year warranty.

Your planters are finished with a process that offers many advantages including UV resistance and can withstand extreme conditions. While our finish is very durable, storing planters in wet or steamy cartons or standing water can cause damage. Normal use allowing water to immediately drain off the finish after installation will not cause any harm.

Please note that it is the responsibility of the purchaser to ensure that water is able to drain sufficiently from the containers with outdoor use. This is notably important in regions that are subjected to freezing conditions.

Please note that Cosapots will not be liable for labor, shipping, delivery, or any other costs associated with a claim.

Return Policy

- Greenville Planters does not accept returns.

Other Important Notes

- Planters are not pre-drilled for drainage. Drainage holes must be drilled for outdoor placement. Drainage holes may be drilled by Greenville Planters by customer written request on a charge-per-planter basis
- Planters must not be stored in a continuously wet environment such as in their protective cartons outdoors, or without cartons outdoors without drainage holes.

COSAPOTS is a brand by

The **POTS** Company

Canadian Distributor

Greenville Planters

Mississauga, ON

905 -361- 1368

info@greenvilledesigns.com