



COMMERCIAL & RESIDENTIAL
LANDSCAPE FIBERGLASS PLANTERS



ABOUT THE JAY SCOTTS COLLECTION

for Greenville Planters

The quality of Jay Scotts Collection, the professionalism of our services and the value that our customers have come to expect are the hallmarks of our award-winning formula for success.

Our planters are not only beautiful and unique; they are also functional and durable. They are constructed of the best materials available, manufactured by our remarkably skilled craftsman and are made to last and to maintain their beauty for years to come.

Greenville's dedicated and knowledgeable sales and customer service team take pride in providing exceptional service and attention to every detail during and after the sales process.

Our teams of prep and finish, quality control along with packing and shipping are responsible for every planter passing our strict standards. Each shipment is carefully packaged to arrive safely and ensure customer satisfaction.

We, at Greenville, look forward to working with you on your next project!

MISSION

Greenville is committed to excellence by offering quality planters and containers at exceptional prices. We value our customers and are determined to have a thorough understanding of your needs so we may provide complete satisfaction. Greenvilles team members are excited to work with you to transform your project from conception to installation with quality craftsmanship, exceptional service and timely delivery.

VISION

To have Jay Scotts Collection of planters beautify landscapes, properties and businesses across the globe.

Greenville Planters
Authorized Distributor of the Jay Scotts Collection

1295 Kamato Rd. | Mississauga, ON L4W 2M2 | info@greenvilledesigns.com
T: 905-361-1368 | greenvilledesigns.com

OUR CUSTOMERS, OUR PRODUCTS

The Greenville difference emphasizes the priority we place on satisfied customer interaction, quality products and services. We don't think our customers should have to settle, so we go the extra mile before, during and after the sale to ensure your complete satisfaction.

OUR GOAL IS TO CREATE A MEMORABLE GREENVILLE/ JAY SCOTTS EXPERIENCE THAT TRANSLATES INTO YOUR BECOMING A CUSTOMER FOR LIFE.

Greenville team members will always make you feel welcome. We are committed to learning about your needs and providing quick and efficient action with timely communications. Greenville Planters wants you to be completely satisfied.

WHAT OUR CUSTOMERS SAY ABOUT US.

Our customers are based across the country, from Vancouver Island, to Newfoundland, to the far north, and many points in between.

And almost without exception the feedback has been very positive. The features our clients like the most include the modern, clean design, the variety of large sizes and shapes, the great quality and ability of the planters to remain outdoors on a year-round basis and maintain its visual appeal, and finally, the value our planters deliver.

You can find our planters on rooftops, on city streets, acting as eye-pleasing barriers surrounding restaurant patios, on decks, in front of entranceways, in atriums and offices, schools and institutions, on lake docks and condo balconies, and more.

Our most frequent comment from the professional landscape trade can be paraphrased as follows:

"We've been looking for planter pots like this for a long time. We did not have any success until, finally, we found you."

Planters like this deserve a special place. And so, know that our business model means our planters are typically placed by the professional landscape community. That group includes landscape architects who specify these into their projects, landscape designers who include them in their designs and landscape contractors do the actual placement, as well as others directly involved in landscaping.

If you feel that you would like more information on how you can include the Jay Scotts planters into your landscaping plans please contact us at your convenience. We will do our best to assist you in the process.

TABLE OF CONTENTS

ABOUT JAY SCOTTS	3
Our Customers	4
Table of Contents.....	5
 RECTANGLES	 6
Divide	8
Low Divide.....	10
Rectangle Product References	12
 CUBES + SQUARES	 24
Tapered	26
Columns.....	27
Cubes.....	28
Extra Large Cubes	28
Square Product References.....	30
 ROUND	 36
Tapered	38
Bowls	39
Spheres	40
Cylinders.....	40
Columns.....	41
Architectural	42
Curves	42
Natural Forms.....	43
Round Product References.....	44
 TABLETOPS	 60
Tabletop planters.....	62
Tabletop Product References.....	64
 CARE & MAINTENANCE	
Caring For Your Planters	70
Time To Plant/Planting Instructions	72
Doing Business With Us	74
Your Order Is On It's Way.....	75
 PLANTER INDEX	
Rectangles.....	76
Cubes & Squares.....	77
Round	78
Tabletops	80
Saucers.....	81
Warranty	82
Color Finishes.....	83
Back Cover.....	84



RECTANGLES



DIVIDE

TORINO • 70125



36 x 24 x 18"
48 x 24 x 18"

GRANADA • 70150



36 x 24 x 24"
48 x 24 x 24"

BRISBANE • 70300



36 x 24 x 32"
48 x 24 x 32"



TOLGA • 69367



POTSDAM • 69345



PERTH • 69050



36 x 16 x 24"
48 x 16 x 24"
60 x 16 x 24"



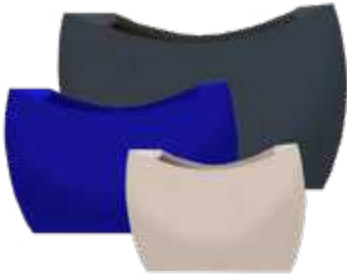
36 x 16 x 32"
48 x 16 x 32"
72 x 16 x 32"



36 x 16 x 42"
48 x 16 x 42"

DIVIDE

SEOUL • 69370



*DIP HEIGHT

32 x 12 x 18/*16"
36 x 16 x 24/*20"
48 x 20 x 36/*30"

AMSTERDAM • 69615



TAPERED

16 x 10 x 26"
20 x 12 x 30"

PANAMA • 69715



TAPERED

36 x 12 x 18"



Milano 69419



Panama 69715



Hudson 69381

MILANO • 69419



24 x 10 x 24"
36 x 10 x 24"
48 x 10 x 24"

AMESBURY • 69729



24 x 10 x 32"
36 x 10 x 32"
48 x 10 x 32"

HUDSON • 69381



100 x 18 x 28"

LOW DIVIDE

CAMOUX • 69213



36 x 8 x 18"
48 x 8 x 18"
54 x 8 x 18"

SALON • 69210



42 x 8 x 8"

BONN • 69358



45 x 15 x 8"



Salon 69210



Bonn 69358



Camoux 69213

KIEL • 69013



36 x 14 x 12"

MONTSERRAT • 69030



48 x 14 x 12"

NARBONNE • 69010



65 x 14 x 12"

LOW DIVIDE

BADALONA • 69220



39 x 17 x 17"



Badalona 69220

LYON • 69719



48 x 18 x 12"



Tiergarden 69761

TIERGARDEN • 69761



RAILING PLANTER
36 x 12 x 10"



Selenge 69497

ANTWERP • 70100



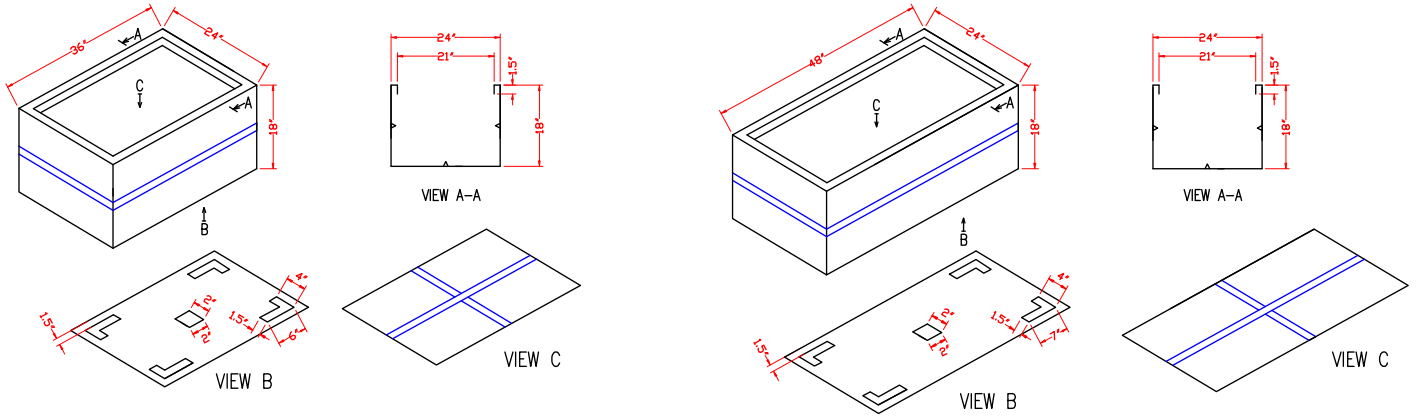
36 x 24 x 12"
48 x 24 x 12"

SELENGE • 69497

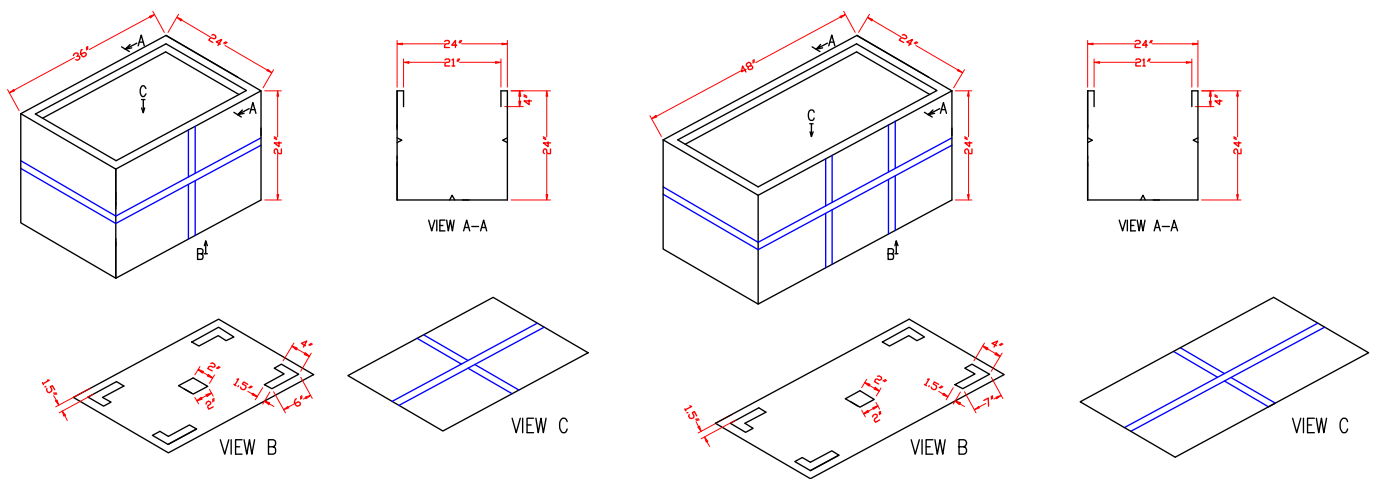


84 x 36 x 18"

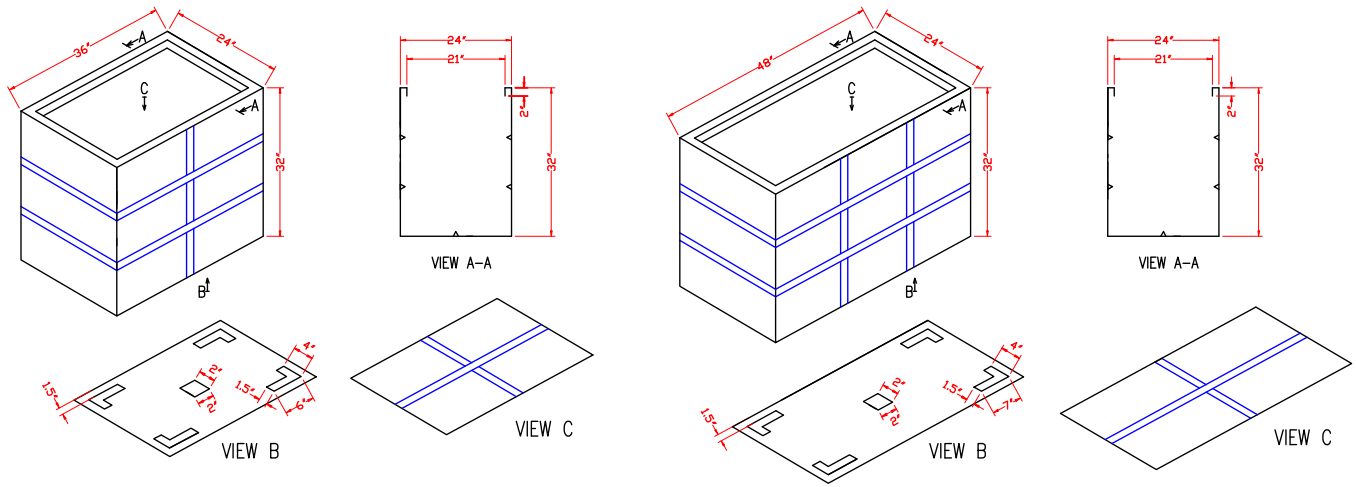
TORINO 70125



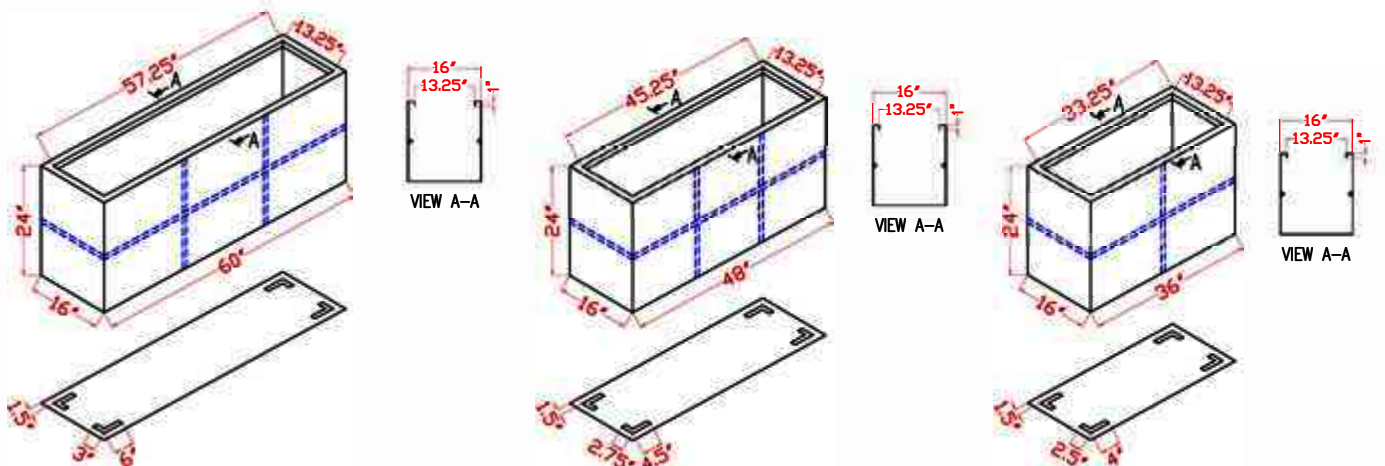
GRANADA 70150



BRISBANE 70300



TOLGA 69367

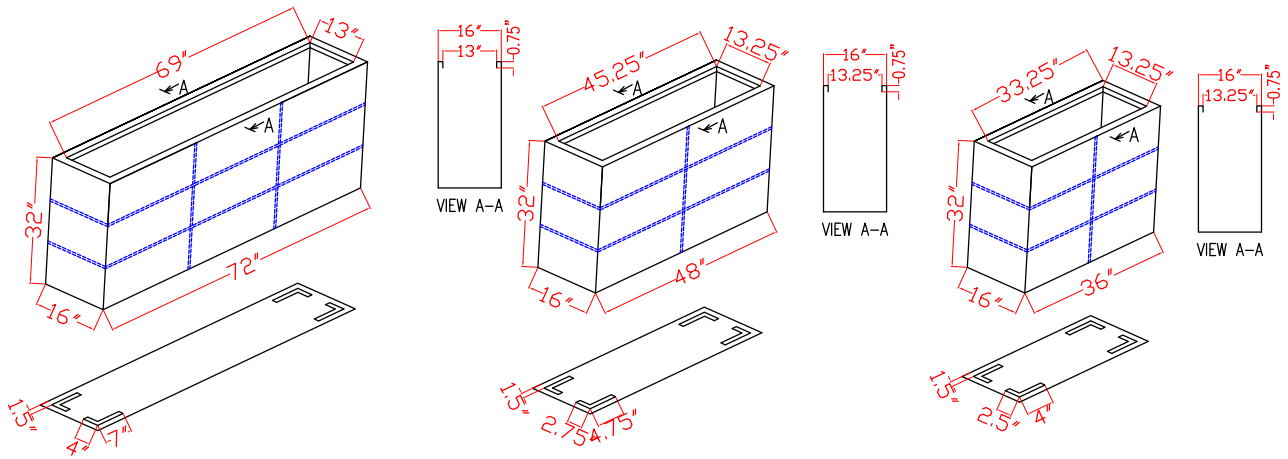


*Blue lines denote support beams.

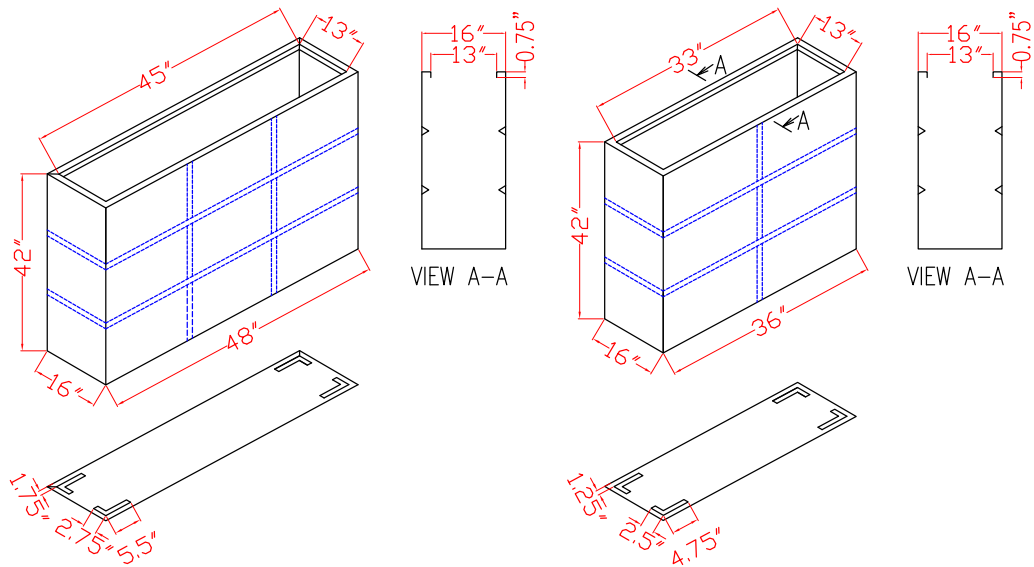
Contact us today! | (905) 361-1368

The Global Source for Design Innovation

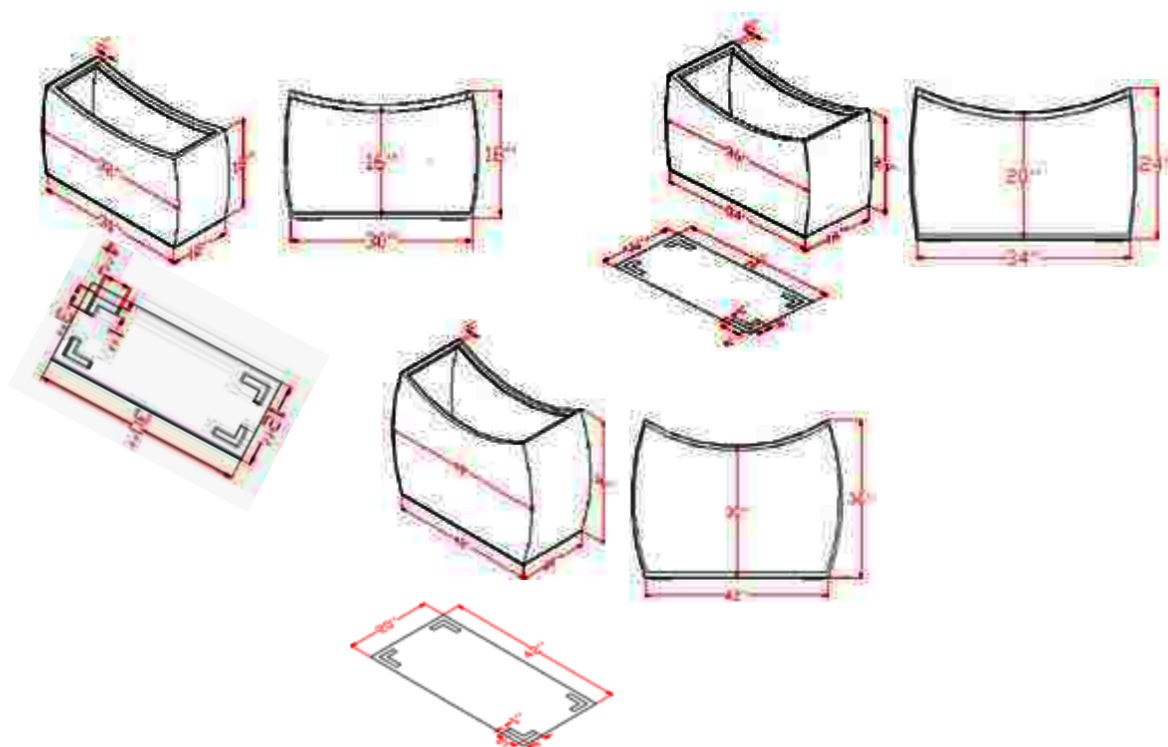
POTSDAM 69345



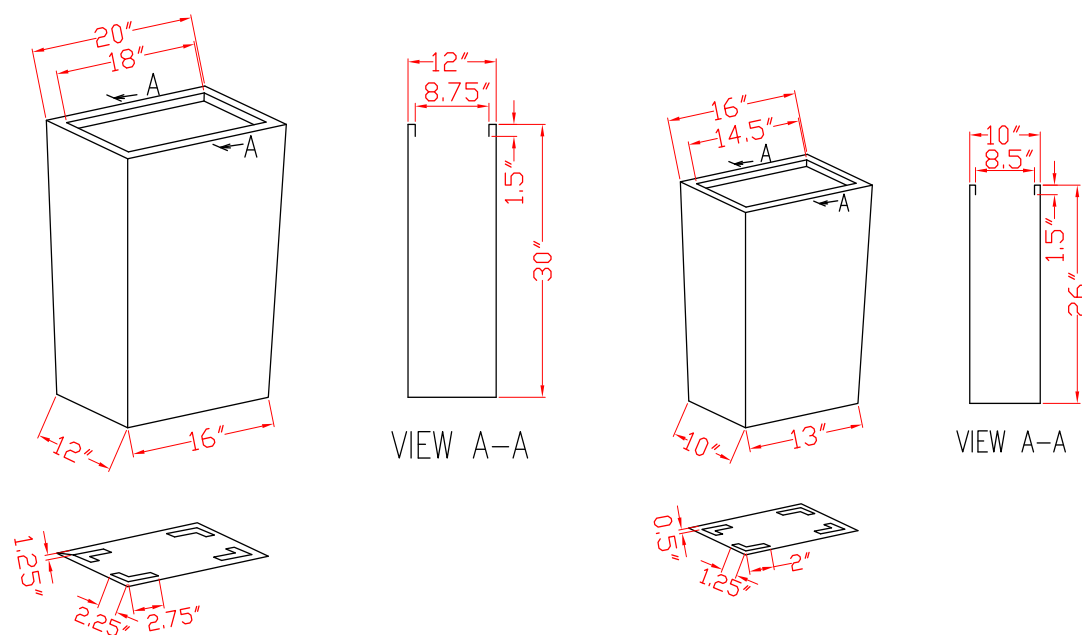
PERTH 69050



SEOUL 69370



AMSTERDAM 69615

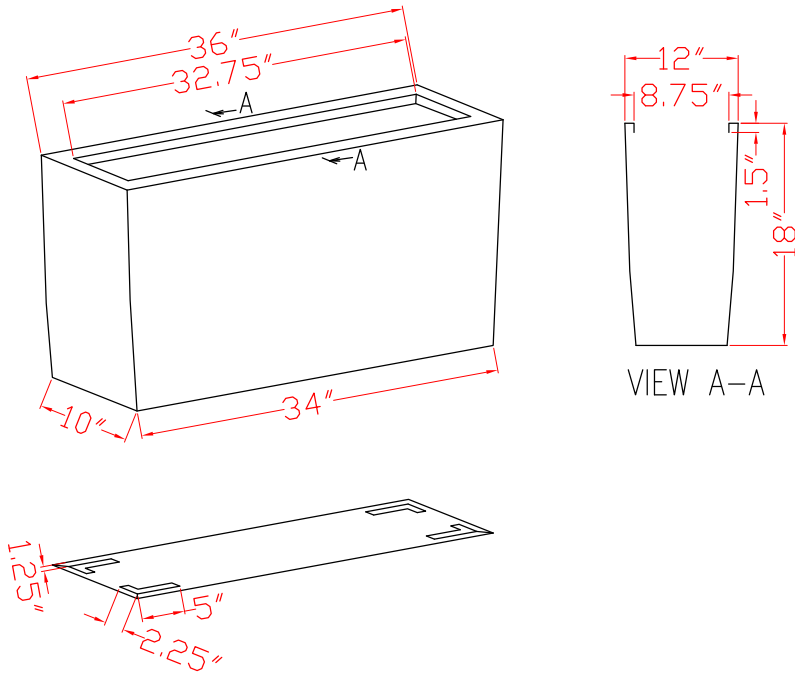


*Blue lines denote support beams.

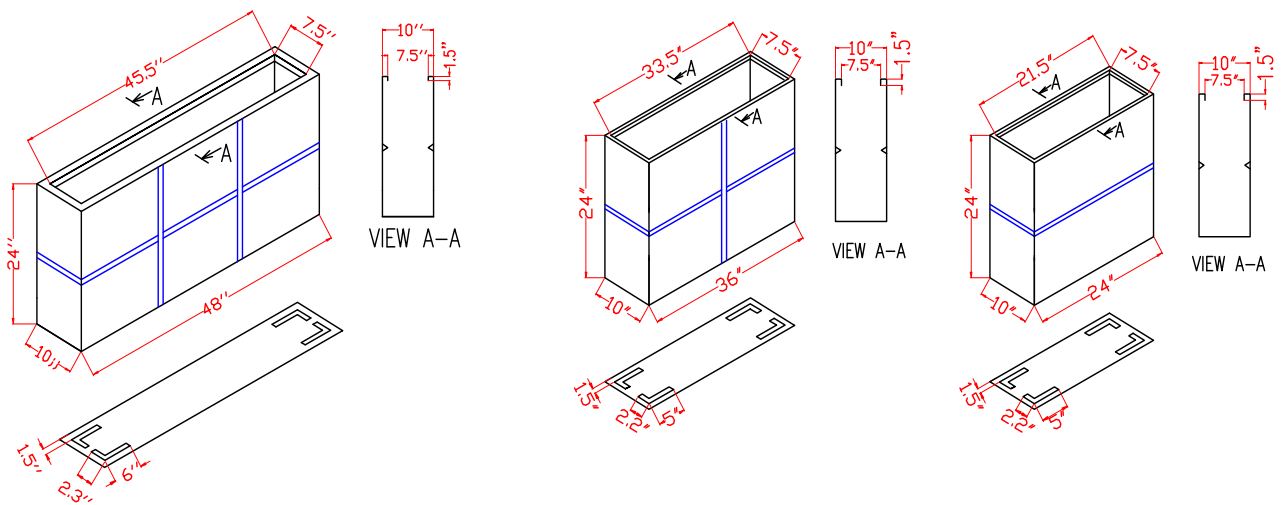
Contact us today! | (905) 361-1368

The Global Source for Design Innovation

PANAMA 69715



MILANO 69419

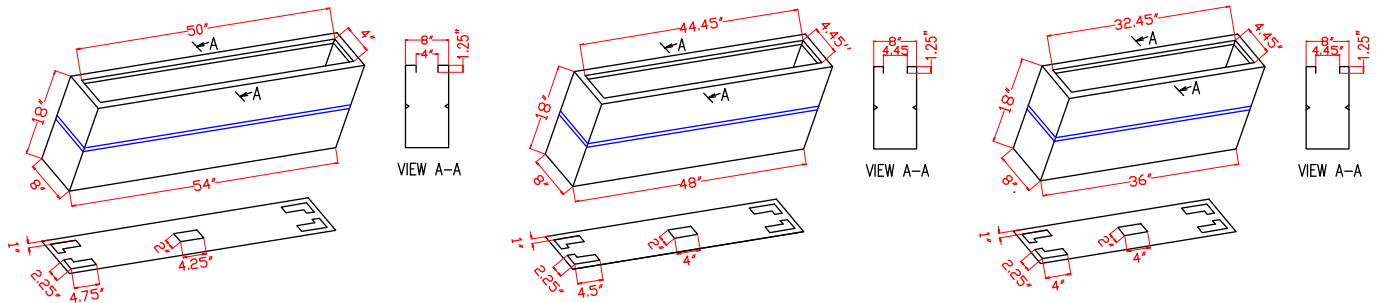


*Blue lines denote support beams.

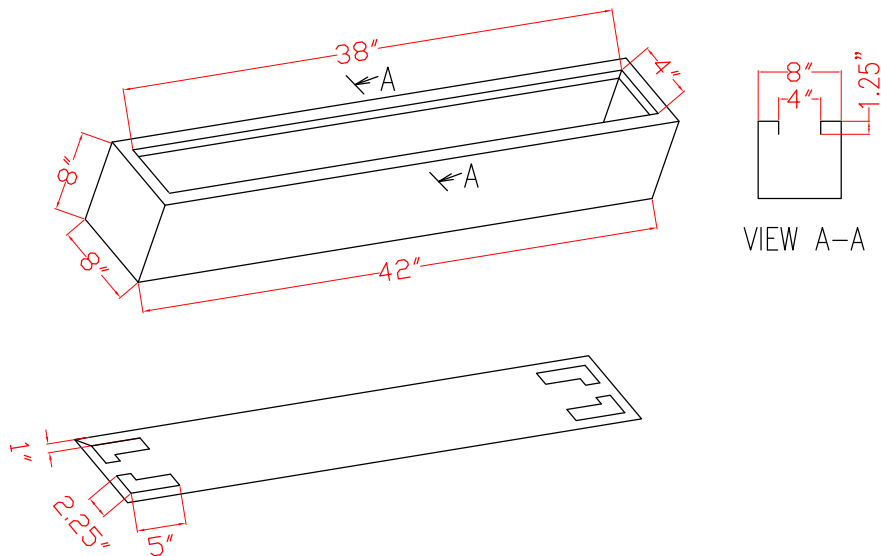
SPECIFICATION SHEETS



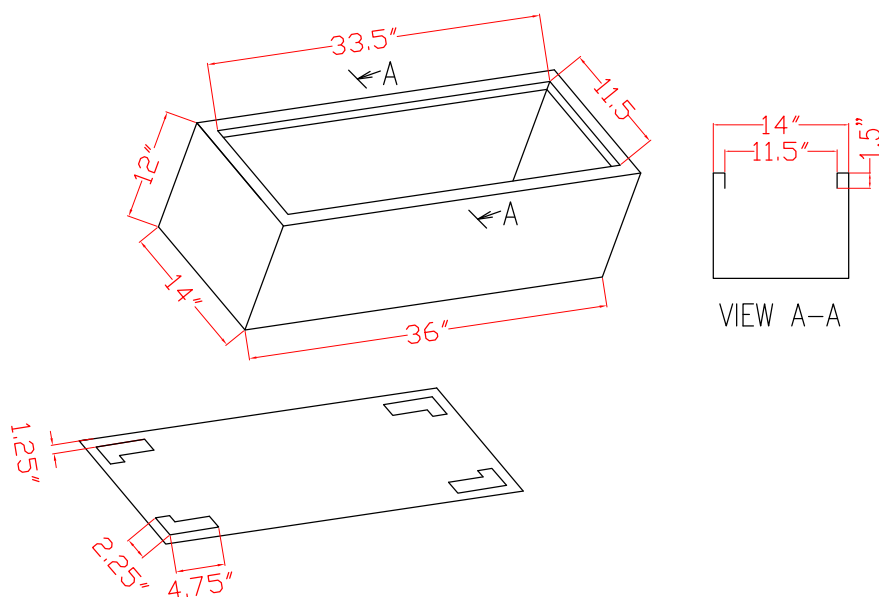
CAMOUX 69213



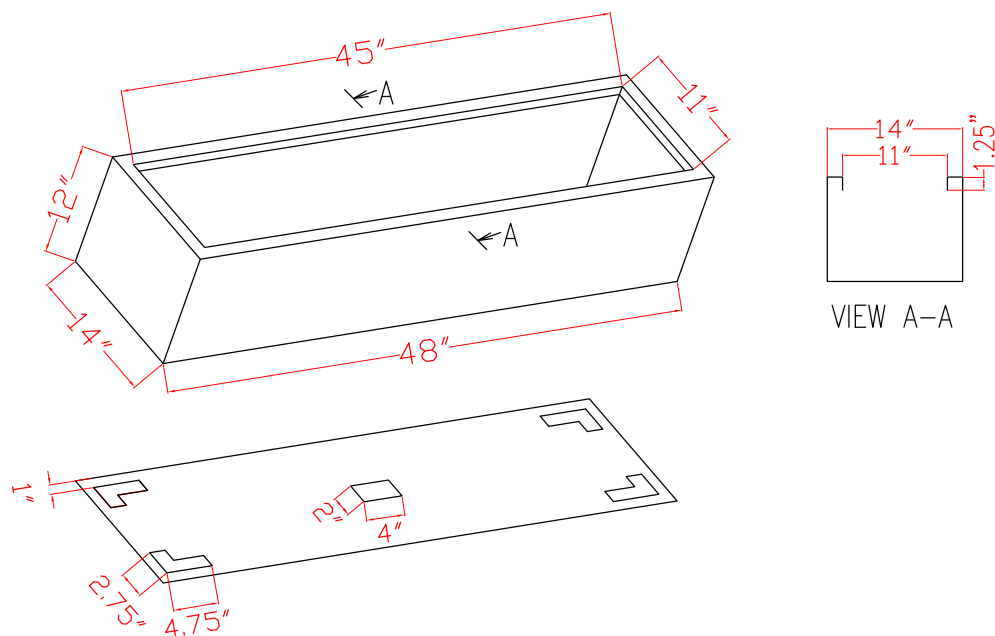
SALON 69210



KIEL 69013

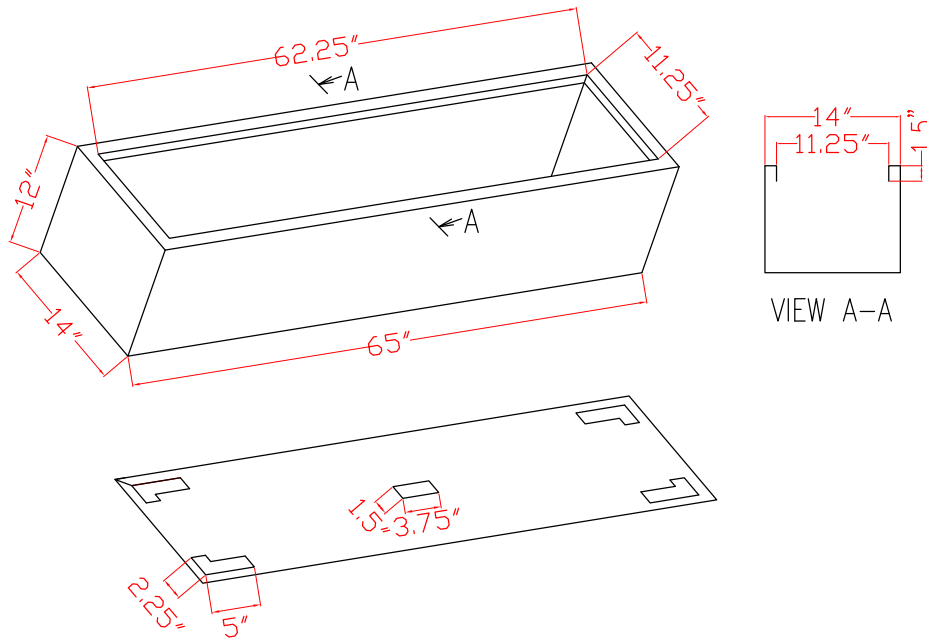


MONTSERRAT 69030

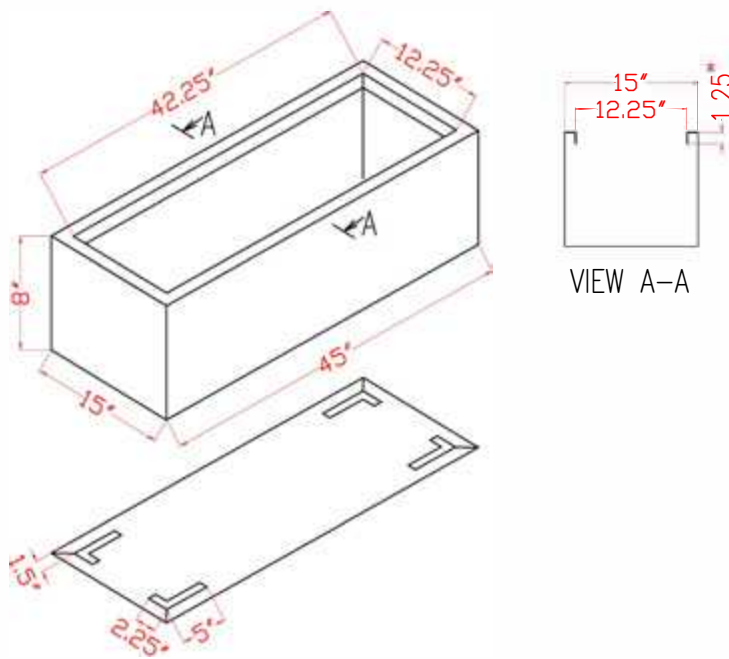


*Blue lines denote support beams.

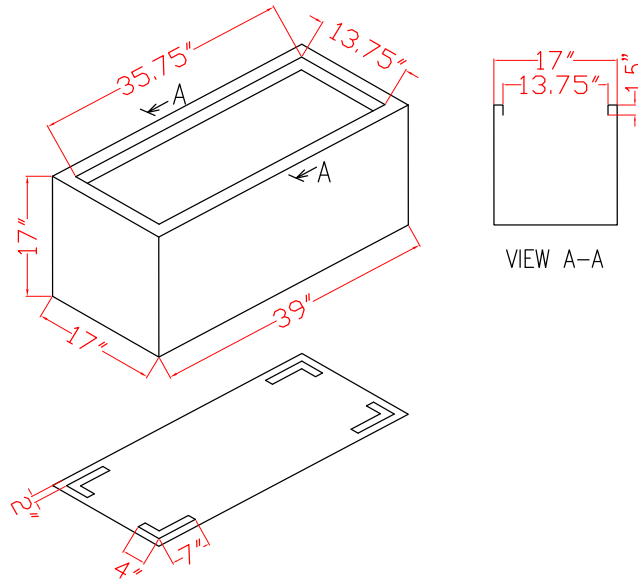
NARBONNE 69010



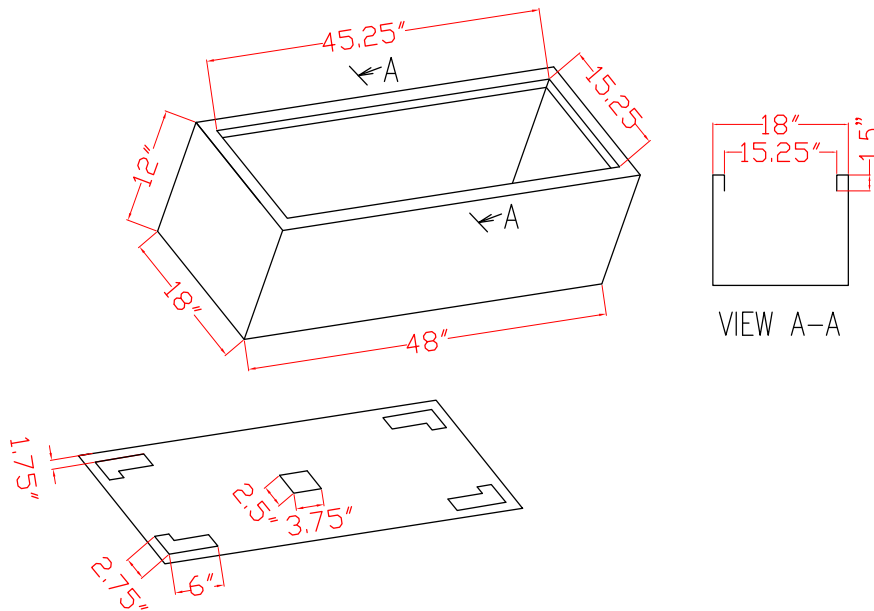
BONN 69358



BADALONA 69220



LYON 69719

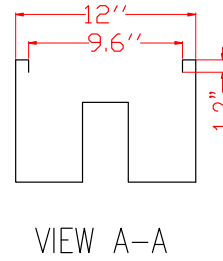
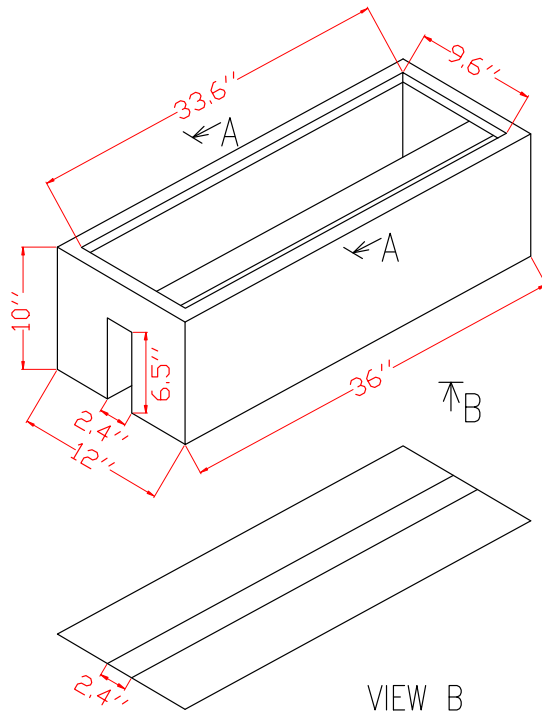


*Blue lines denote support beams.

Contact us today! | (905) 361-1368

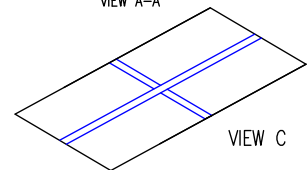
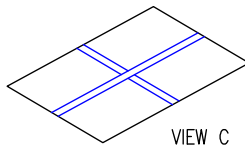
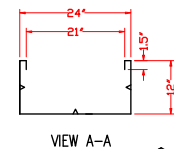
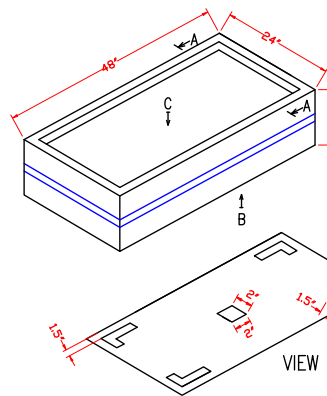
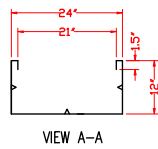
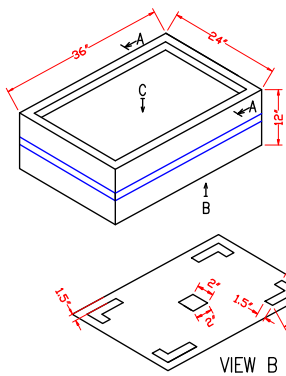
The Global Source for Design Innovation

TIERGARDEN 69761

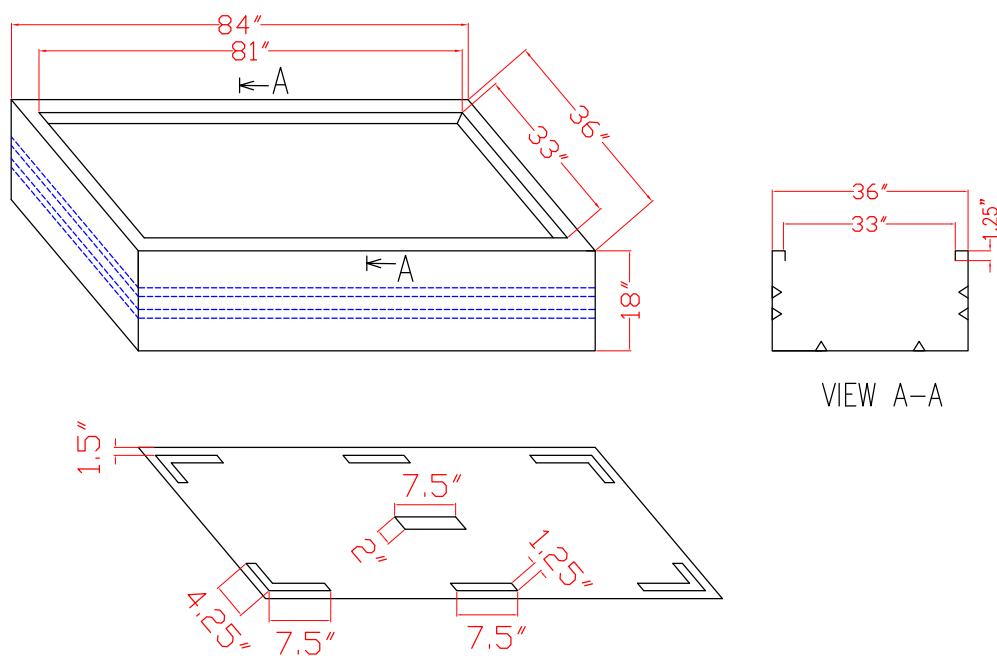


VIEW B

ANTWERP 70100



SELENGE 69497



*Blue lines denote support beams.



CUBES & SQUARES



TAPERED

BERGEN • 69825



24 x 24 x 17"

KATHRYN • 69904



24 x 24 x 17"

LIMA • 69305



12 x 12 x 12"
16 x 16 x 16"
20 x 20 x 20"
24 x 24 x 24"



Bergen 69825



Kathryn 69904



Lima 69305

TOULAN • 69505



12 x 12 x 22"
16 x 16 x 30"
18 x 18 x 36"
20 x 20 x 42"
23 x 23 x 48"
28 x 28 x 60"

COLUMNS

BRITZ • 69160



8 x 8 x 42"
12 x 12 x 51"
16 x 16 x 60"

SANTIAGO • 69150



12 x 12 x 24"
16 x 16 x 32"
20 x 20 x 42"

SAPPORO • 70350



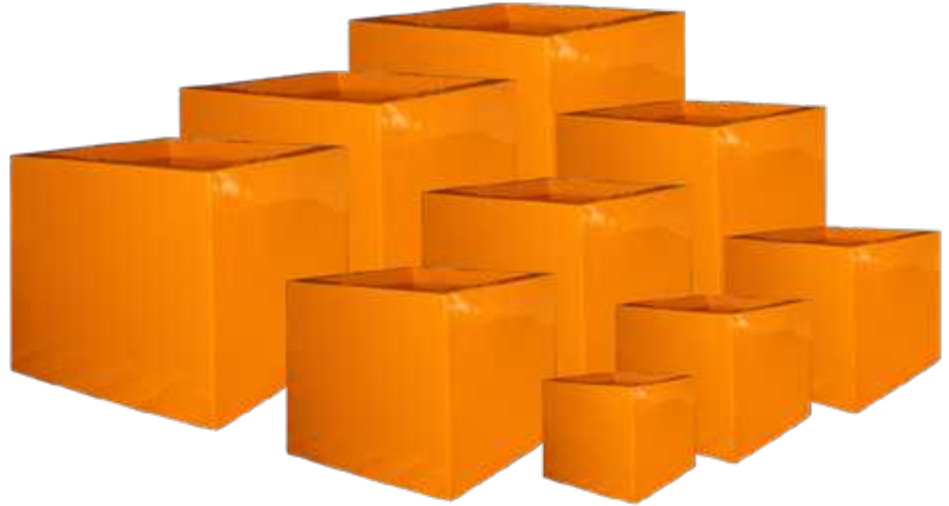
24 x 24 x 32"



CUBES

MONTROY • 69141

12 x 12 x 12"
16 x 16 x 16"
20 x 20 x 20"
22 x 22 x 22"
24 x 24 x 24"
28 x 28 x 28"
32 x 32 x 32"
36 x 36 x 36"
40 x 40 x 40"



EXTRA LARGE CUBES

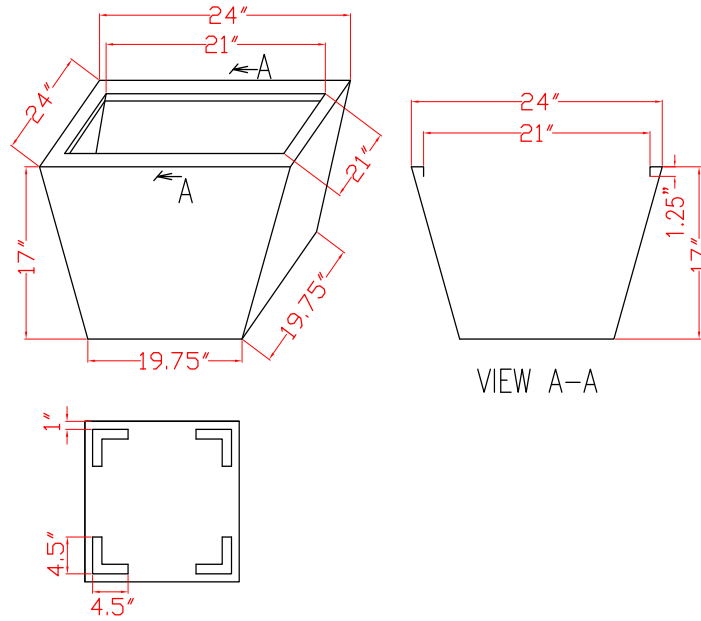
MONTROY • 69141

48 x 48 x 48"
60 x 60 x 60"

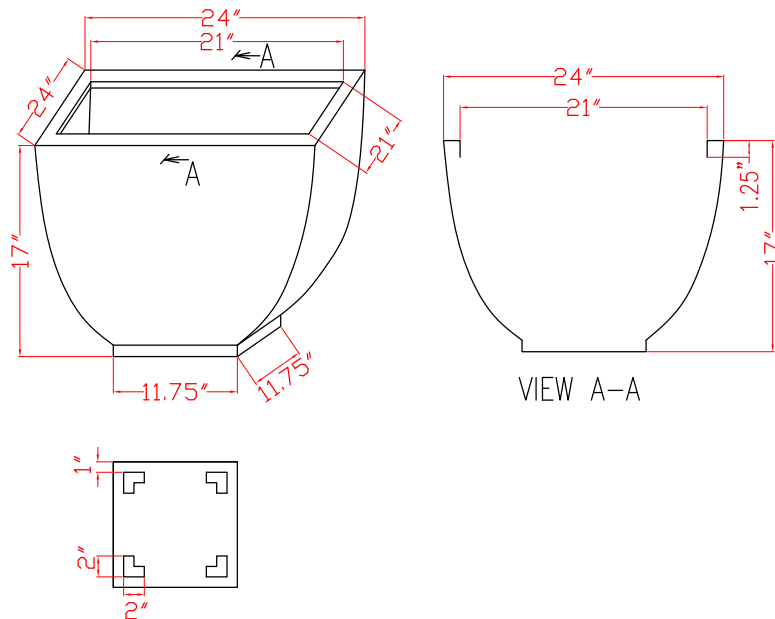




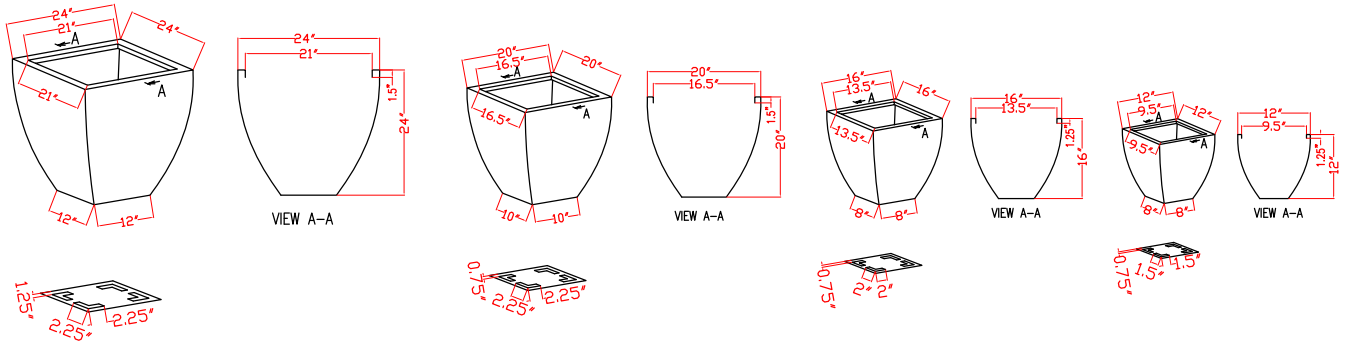
BERGEN 69825



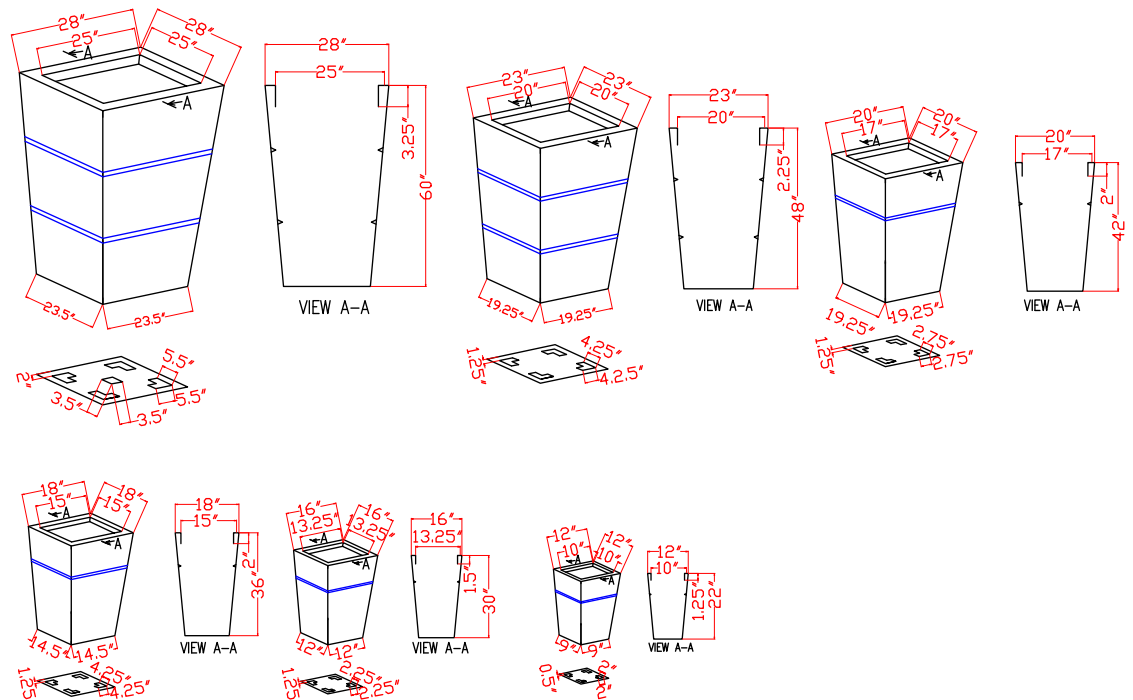
KATHRYN 69904



LIMA 69305



TOULAN 69505

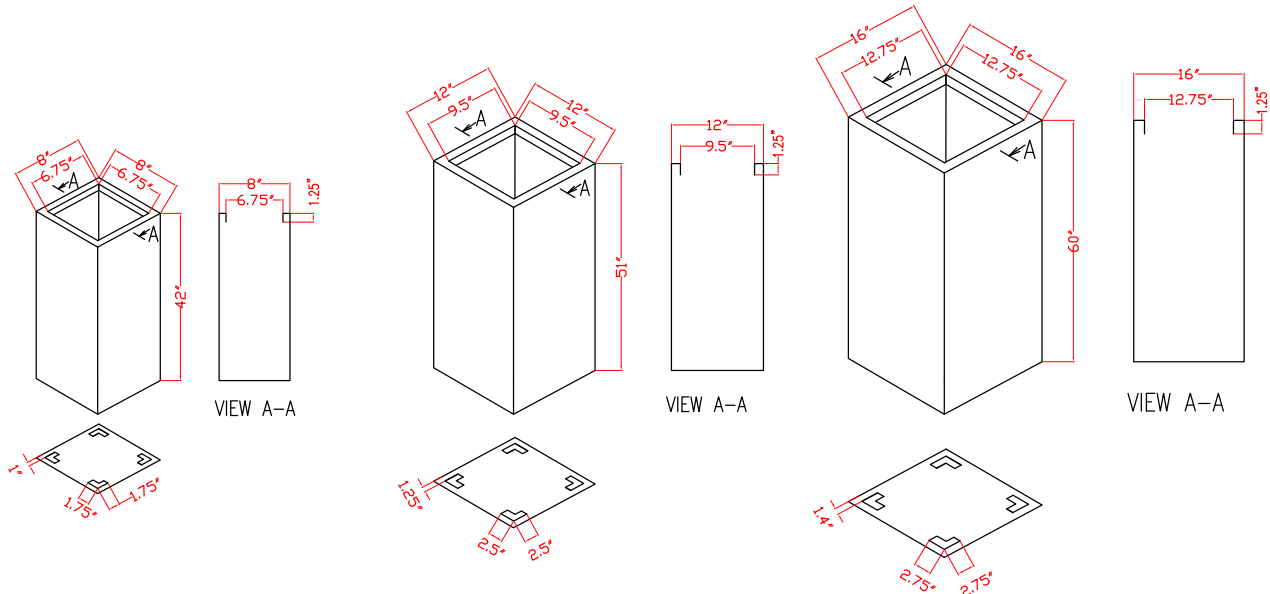


*Blue lines denote support beams.

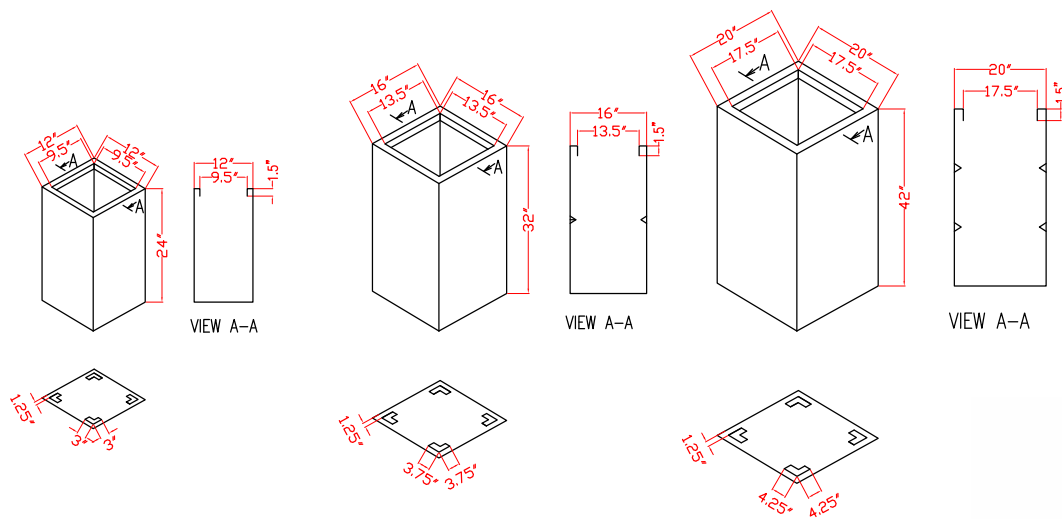
Contact us today! | (905) 361-1368

The Global Source for Design Innovation

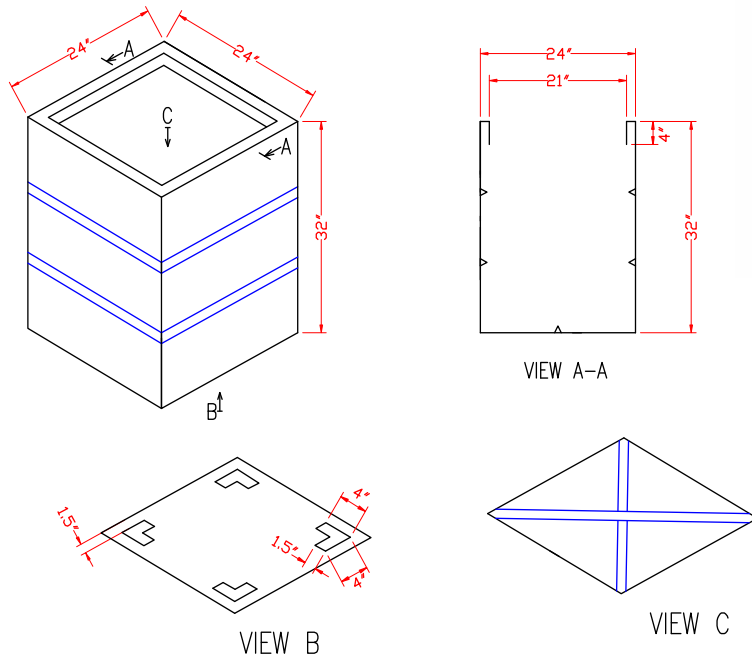
BRITZ 69160



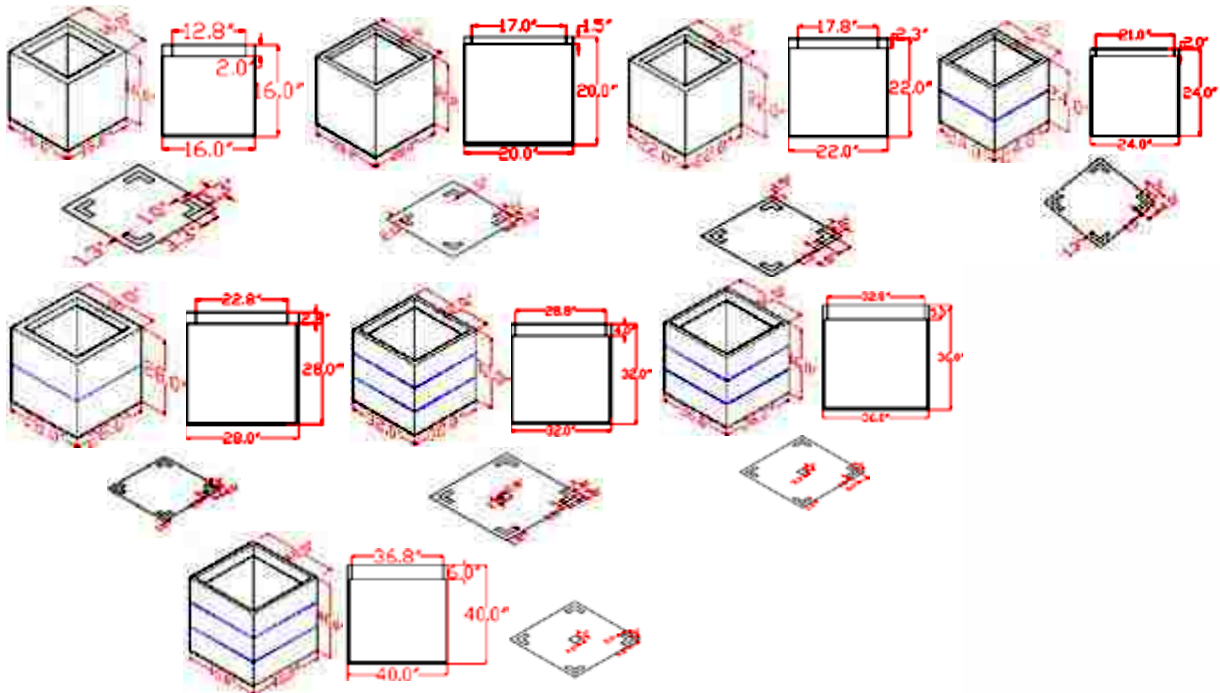
SANTIAGO 69150



SAPPORO 73050



MONTROY 69141

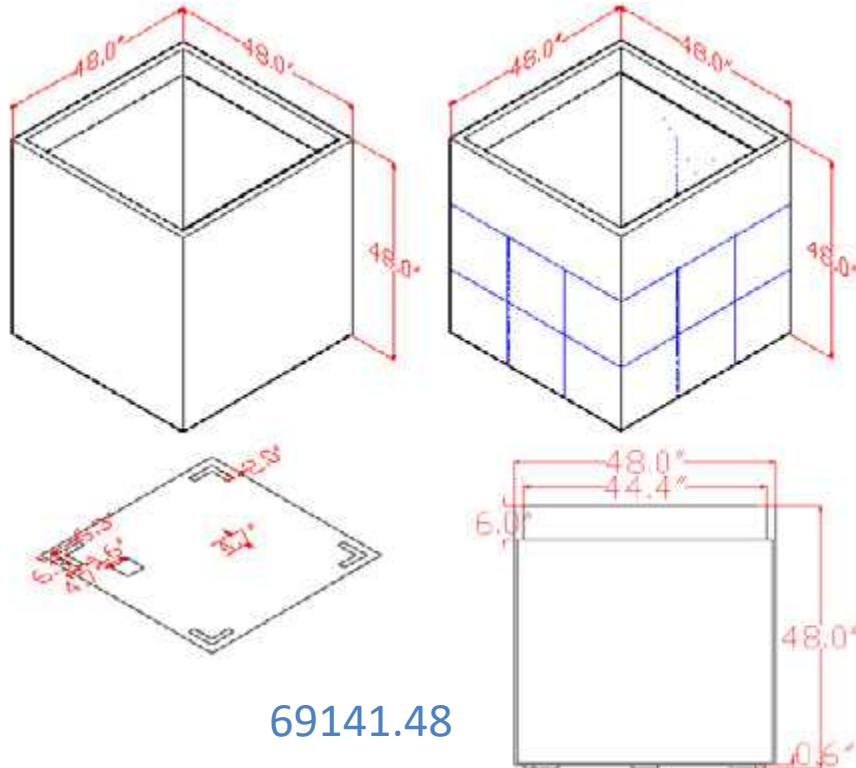


*Blue lines denote support beams.

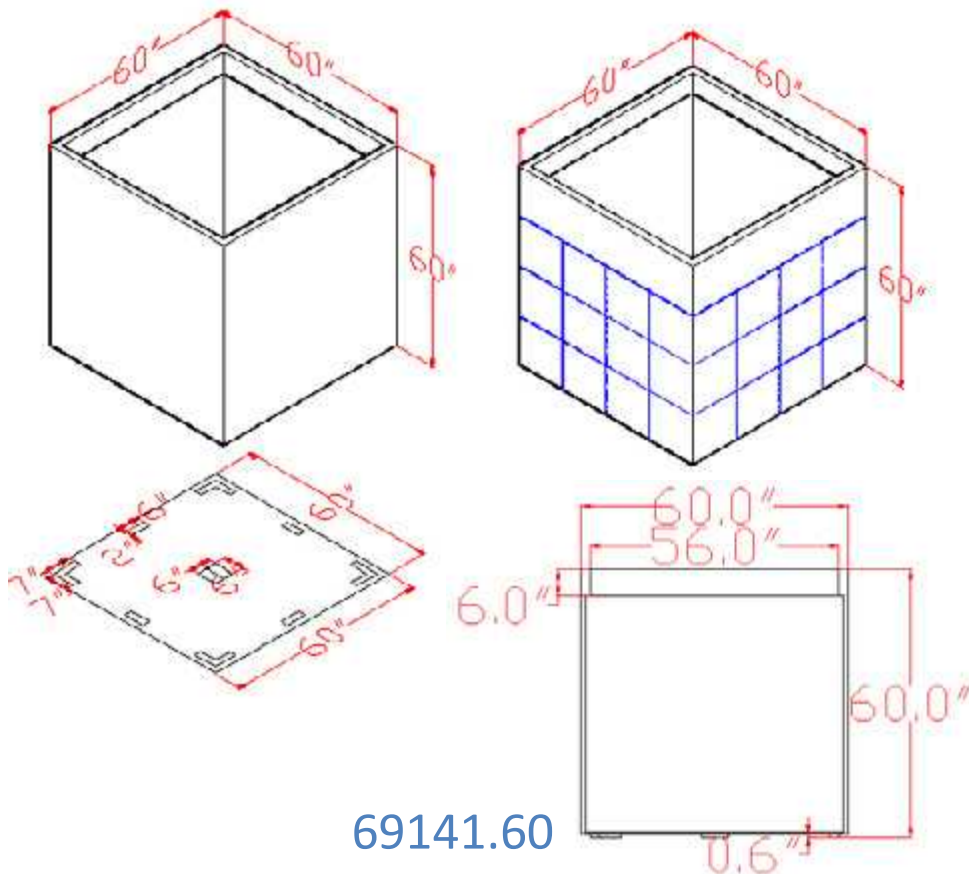
Contact us today! | (905) 361-1368

The Global Source for Design Innovation

EXTRA LARGE MONTROY 69141



69141.48



69141.60

*Blue lines denote support beams.





ROUND



TAPERED

SALZBURG • 69105



16 x 16 x 12"
20 x 20 x 15"

VALENCIA • 69125



15 x 15 x 18"
20 x 20 x 23"
27 x 27 x 31"

BRANNAN • 69600



18 x 18 x 29"
35 x 35 x 41"



ALZIRA • 69285



23 x 23 x 22"
36 x 36 x 34"

WANNSEE • 69230



33 x 33 x 29"
39 x 39 x 34"
44 x 44 x 39"

BOWLS

CASABLANCA • 69790



24 x 24 x 12"
30 x 30 x 15"
36 x 36 x 18"

MARSEILLE • 69795

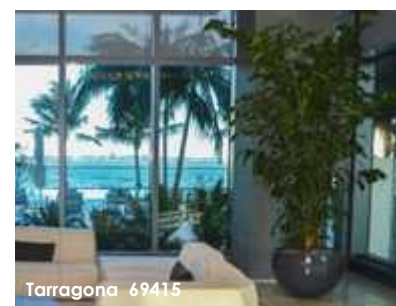


24 x 24 x 12"
36 x 36 x 14"

TARRAGONA • 69415



30 x 30 x 20"



SHANGHAI • 69460



16 x 16 x 14"
21.5 x 21.5 x 19"

NIAGARA • 69135



ROLLED RIM
31 x 31 x 16"
39 x 39 x 20"
48 x 48 x 25"

SPHERES

GLOBE • 69295



24 x 24 x 19"
36 x 36 x 30"

SPIRAL • 69245



OFFSET OPENING
26 x 26 x 26"



CYLINDERS

CORRY • 69607



10 x 10 x 20"
10 x 10 x 30"
12 x 12 x 36"

RIO GRANDE • 69205



18 x 18 x 20"
22 x 22 x 22"
30 x 30 x 30"

COLUMNS

ST. TROPEZ • 69626



12 x 12 x 32"
16 x 16 x 38"
20 x 20 x 43"

LISBON • 69121

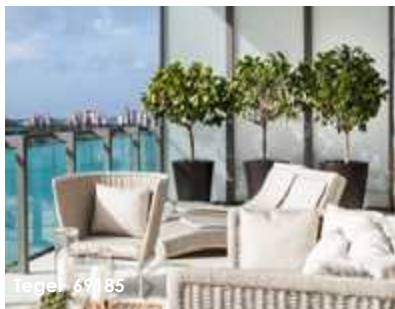


14 x 14 x 25"
18 x 18 x 32"
24 x 24 x 36"

PEGO OVAL • 69225



18 x 14 x 26"
22 x 18 x 30"



Tegel 69185



Peypin 69110



Congress 69900

TEGEL • 69185



18 x 18 x 26"
22 x 22 x 30"

PEYPIN • 69110



28 x 28 x 48"

CONGRESS • 69900



30 x 30 x 63"

ARCHITECTURAL

ALICANTE • 69468



RIBBED

15 x 15 x 21"
22 x 22 x 27"
26 x 26 x 32"

SAN JOSE • 69587



RIBBED

16 x 16 x 30"
22 x 22 x 40"

SANTA BARBARA • 69561



RIBBED

23 x 23 x 20.3"



Hayden 69015



San Jose 69587



Bara Jar 69155

CURVES

HAYDEN • 69015



8 x 8 x 15"
12 x 12 x 20"
15 x 15 x 23"

STRASBOURG • 69215



28 x 28 x 48"

BARÁ JAR • 69155



30 x 30 x 63"

NATURAL FORMS

RIVER ROCK • 69815



22 x 21 x 12"
16 x 10 x 6"
13 x 7 x 4"



River Rock Large 69815

TIMBRELL • 31972



42 x 12 x 7"

*Stand sold separately
29 x 10 x 5"



Short Hayden 69117



Vienna Bowl 69465

SHORT HAYDEN • 69117



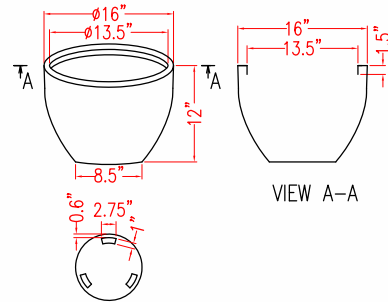
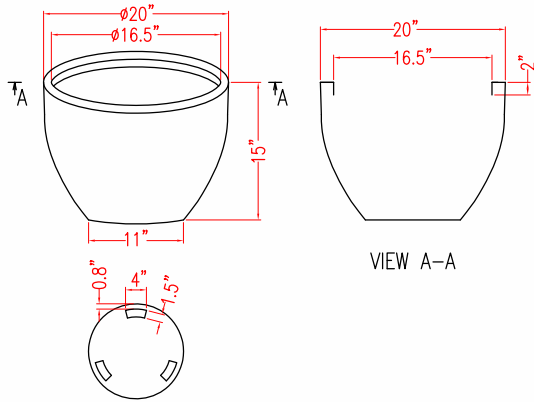
12 x 12 x 7"
16 x 16 x 8"
20 x 20 x 10"

VIENNA BOWL • 69465

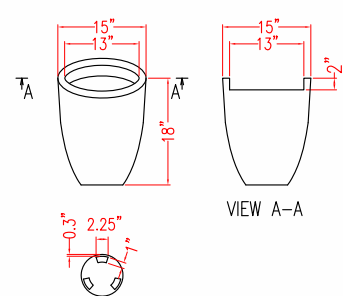
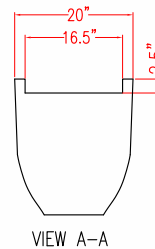
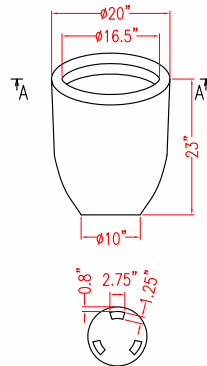
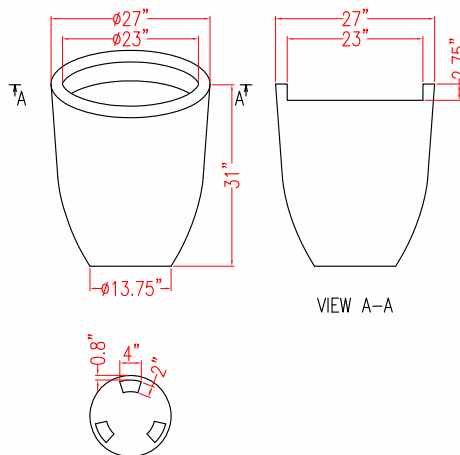


17.5 x 17.5 x 7.5"

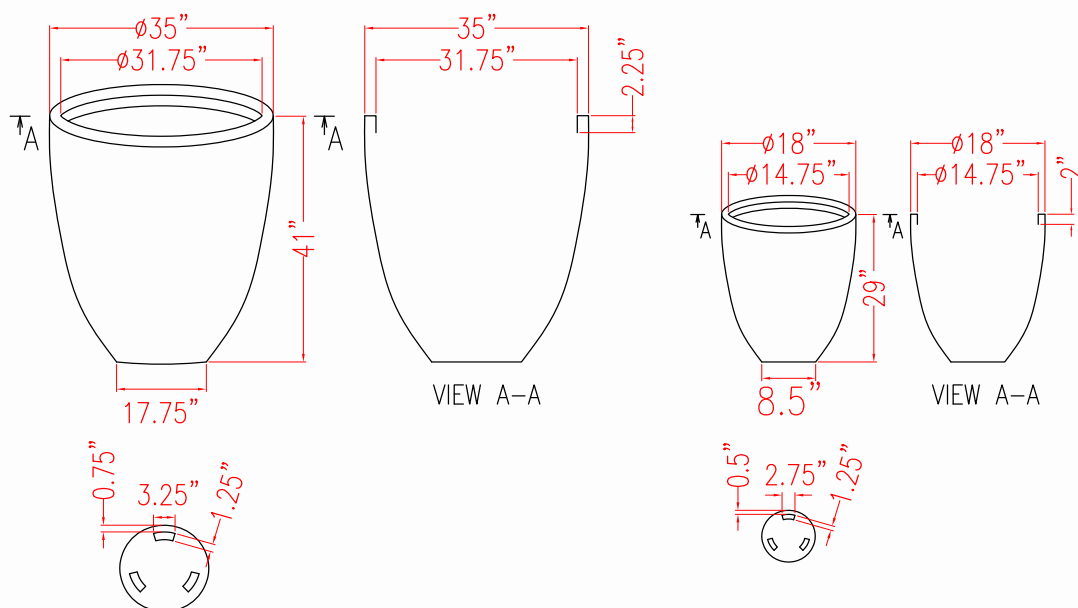
SALZBURG 69105



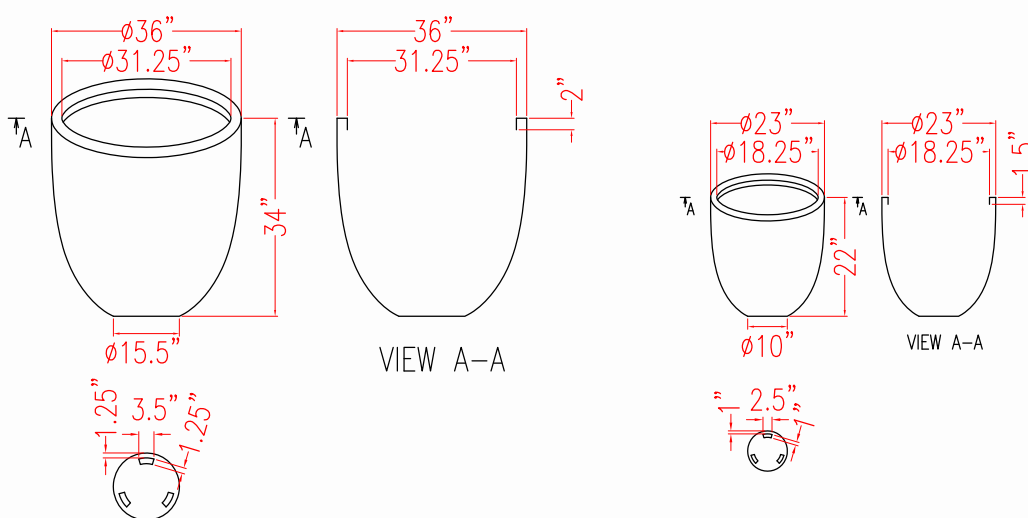
VALENCIA 69125



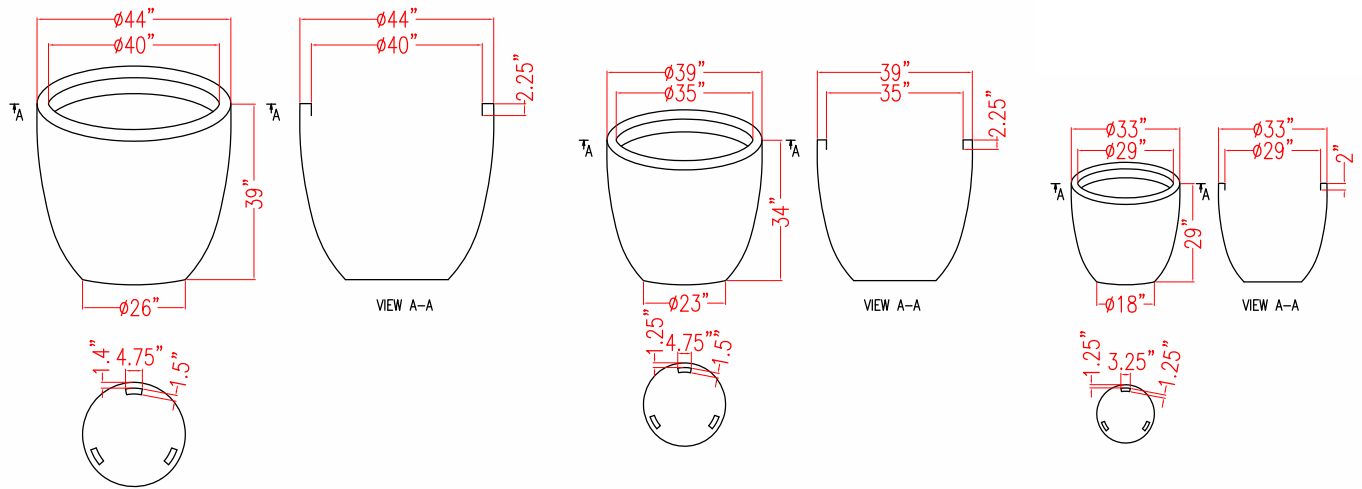
BRANNAN 69600



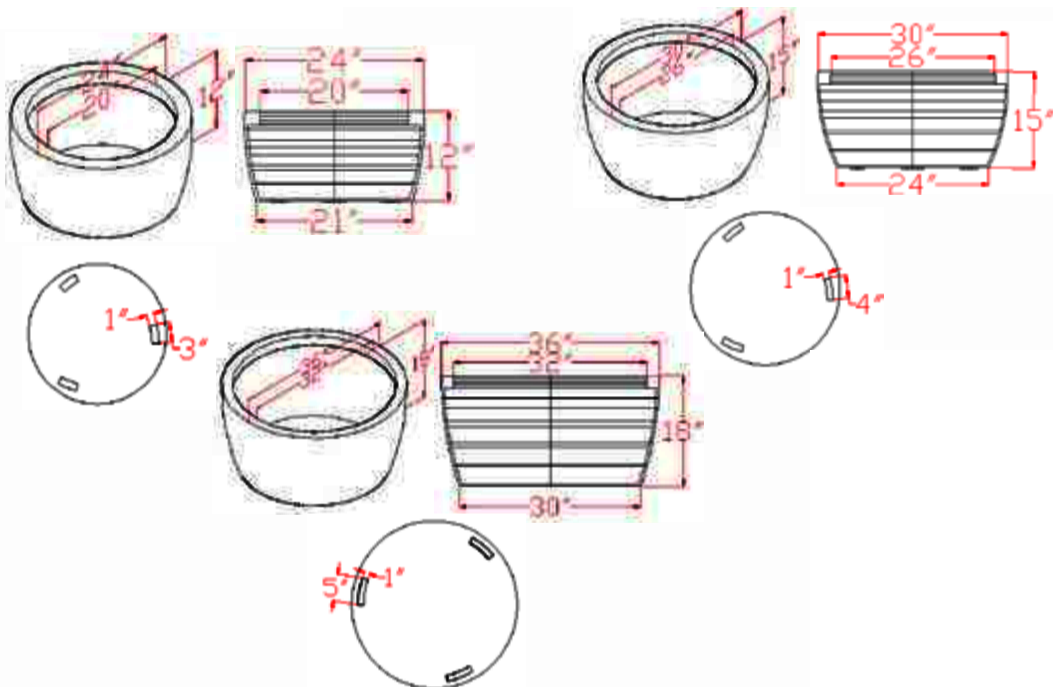
ALZIRA 69285



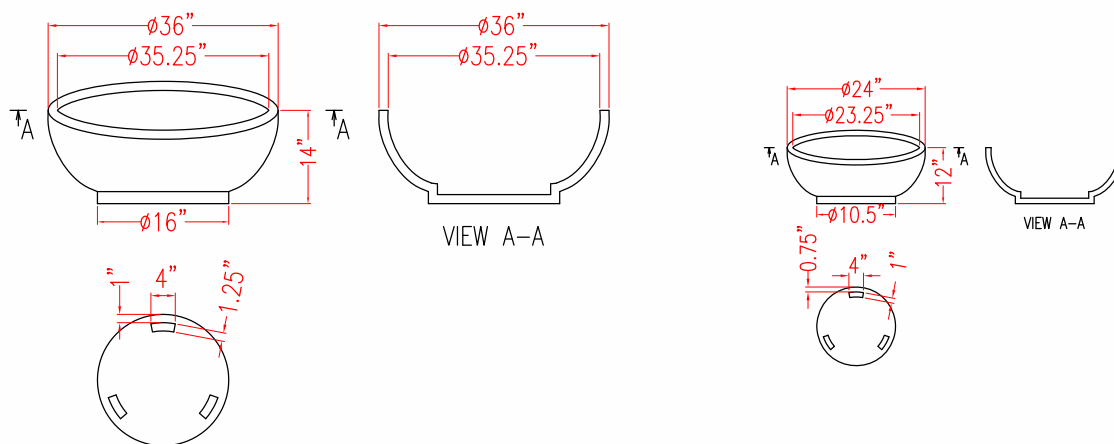
WANNSEE 69230



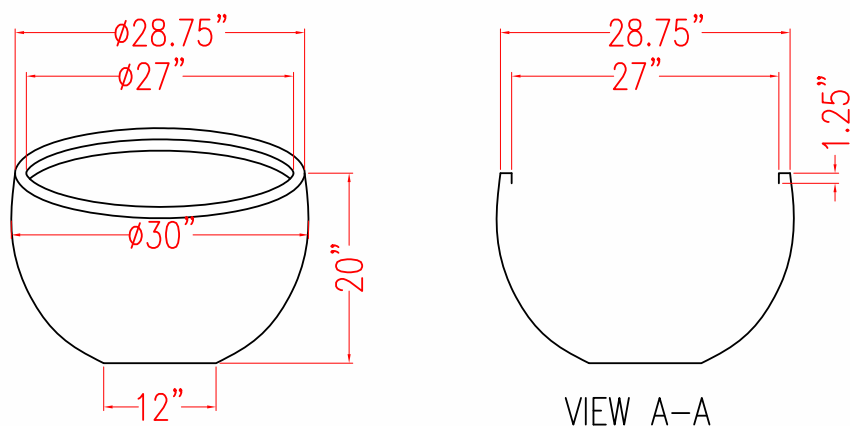
CASABLANCA 69790



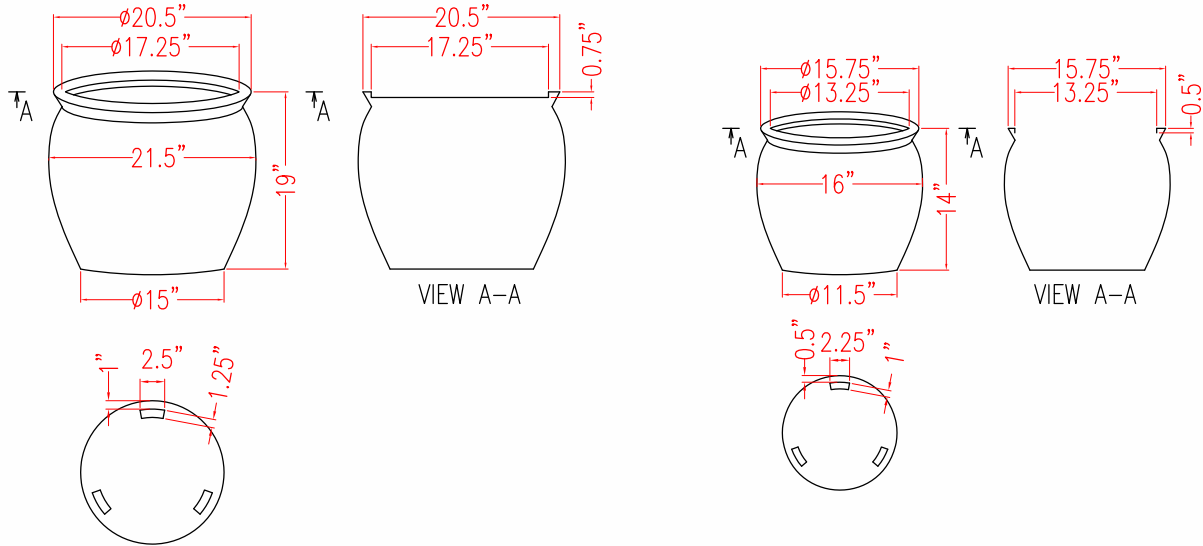
MARSEILLE BOWL 69795



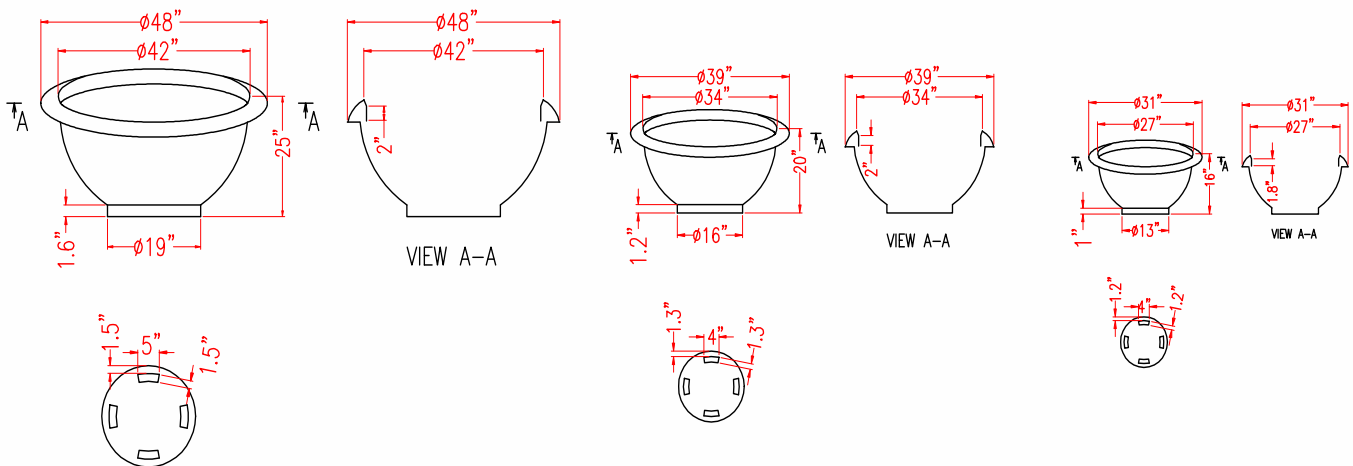
TARRAGONA 69415



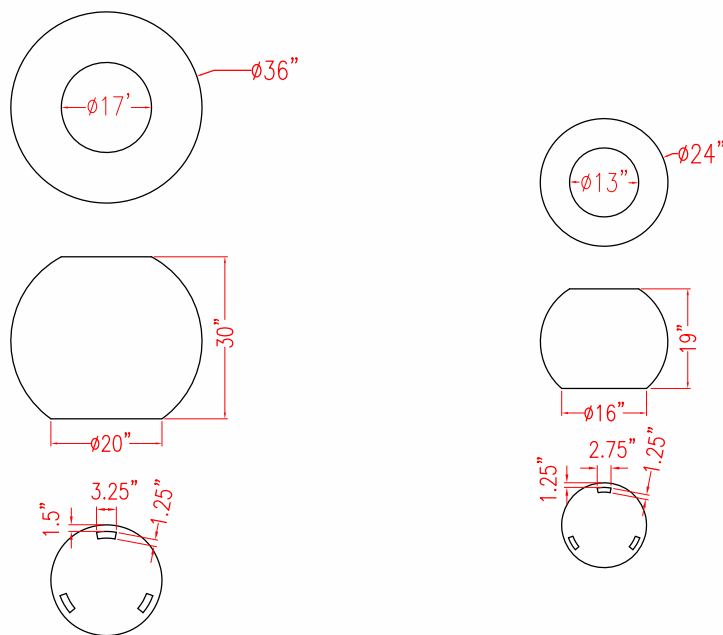
SHANGHAI 69460



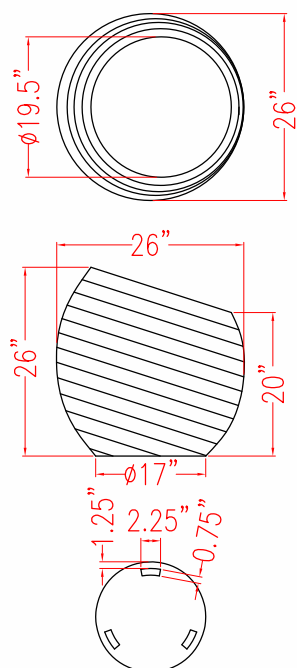
NIAGARA 69135



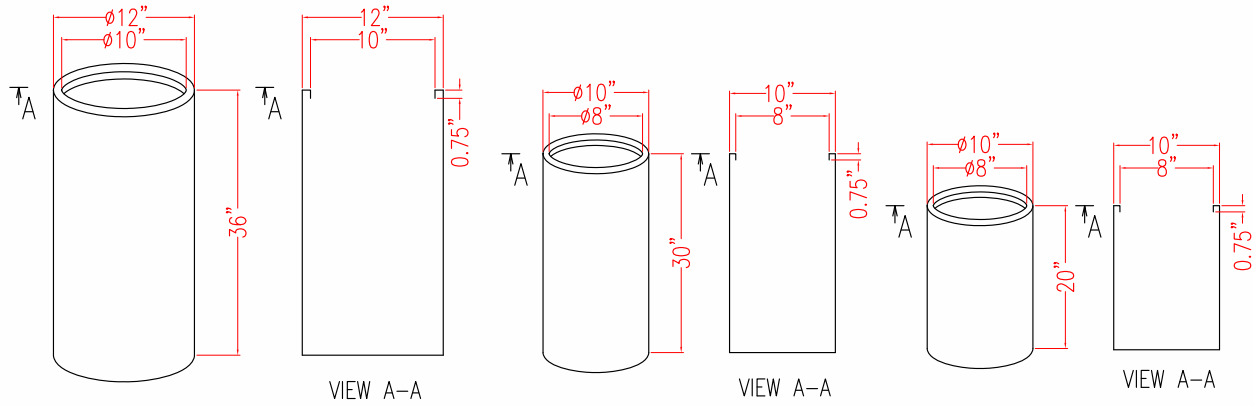
GLOBE 69295



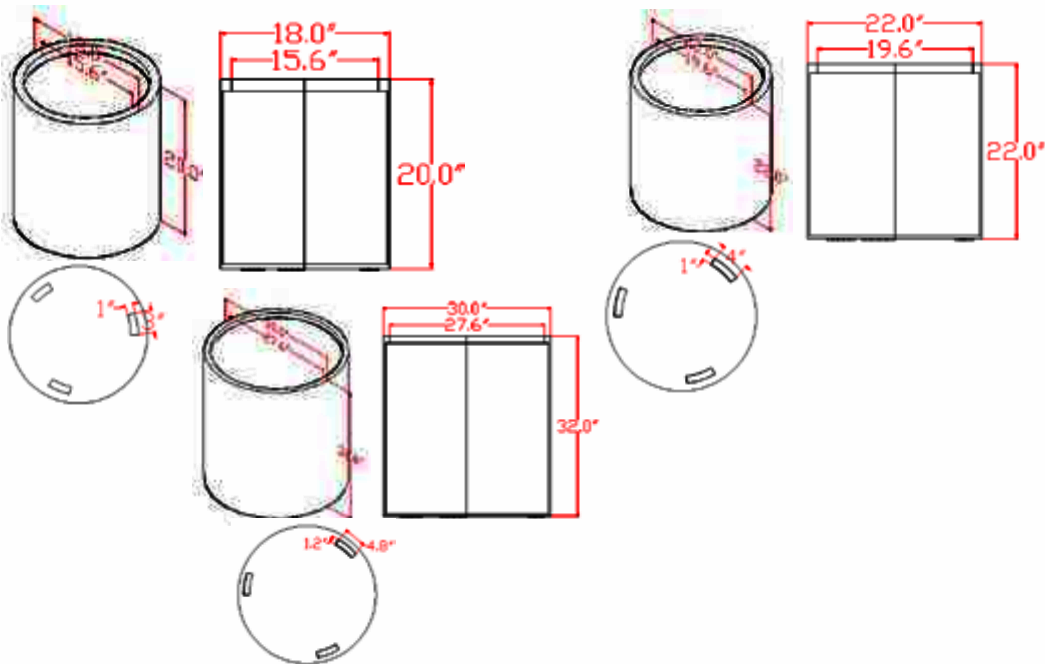
SPIRAL 69245



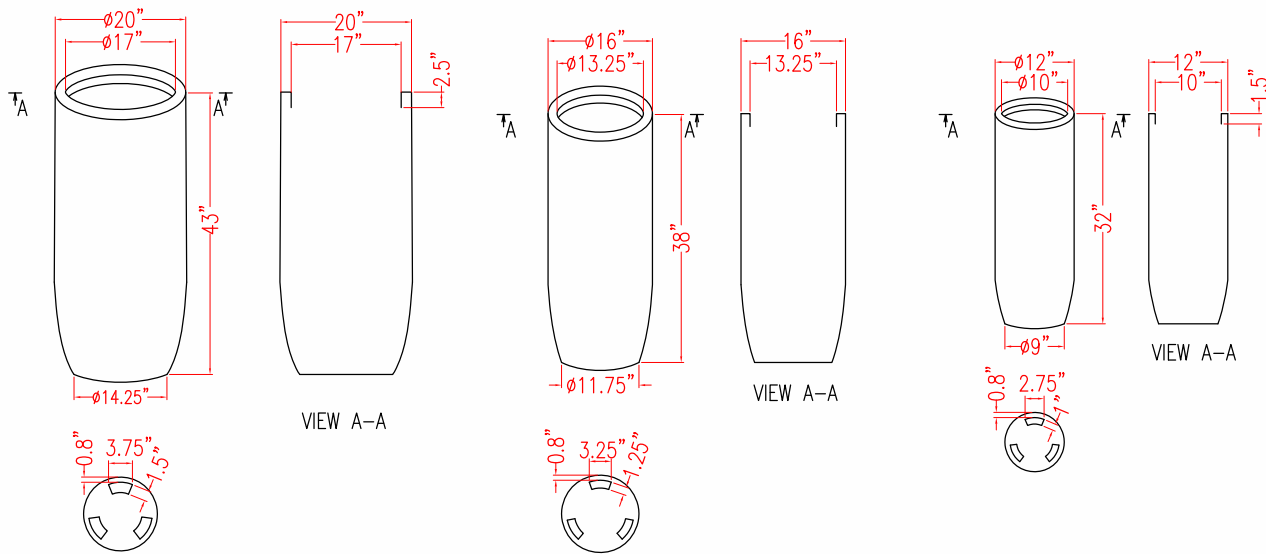
CORRY CYLINDER 69607



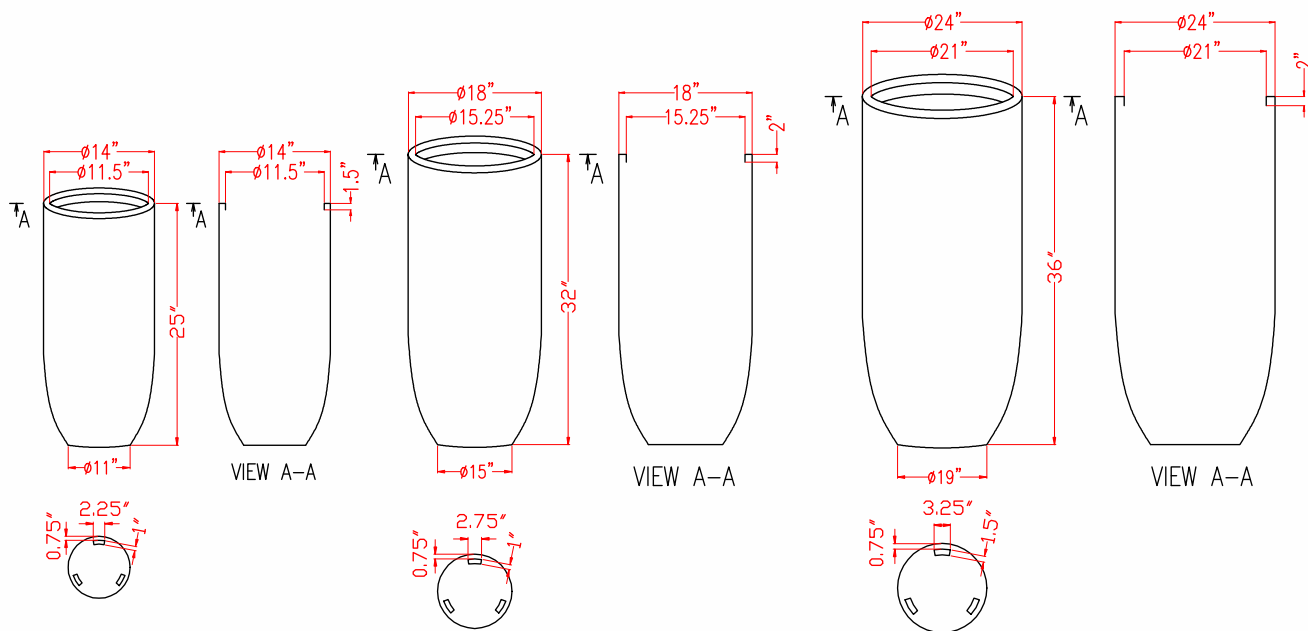
RIO GRANDE 69205



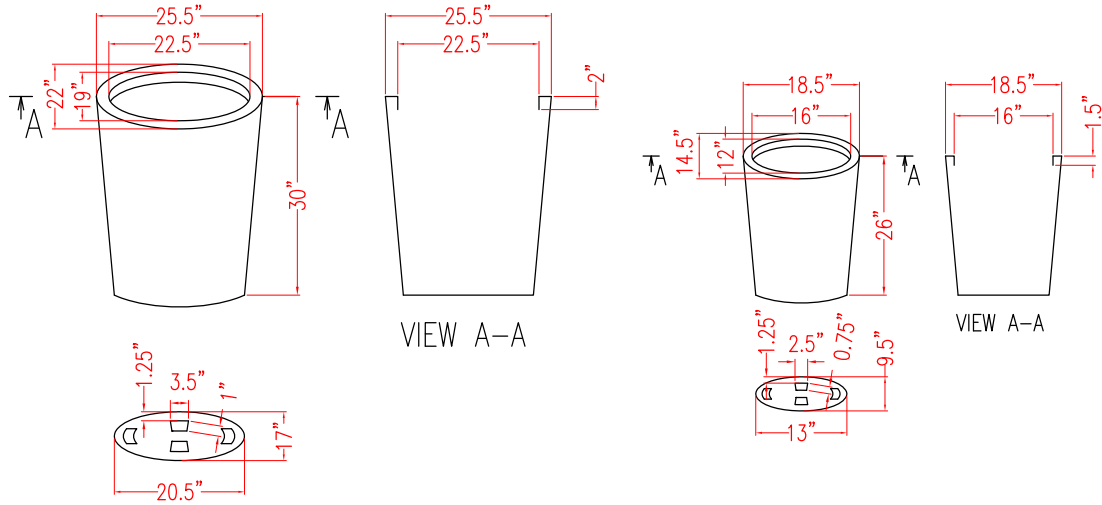
SAINT TROPEZ 69626



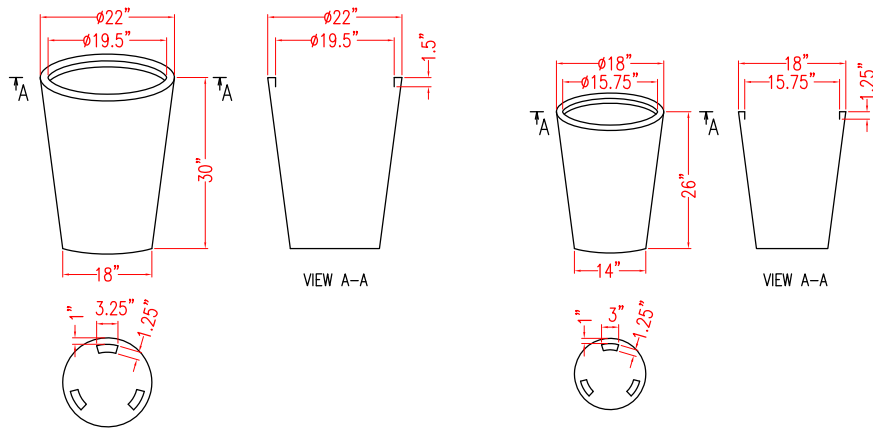
LISBON 69121



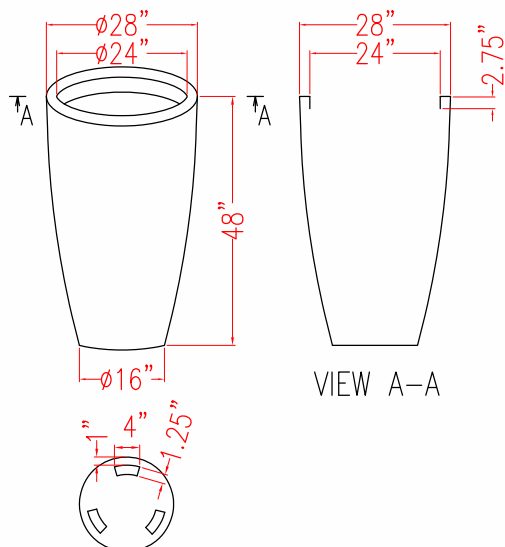
PEGO OVAL 69225



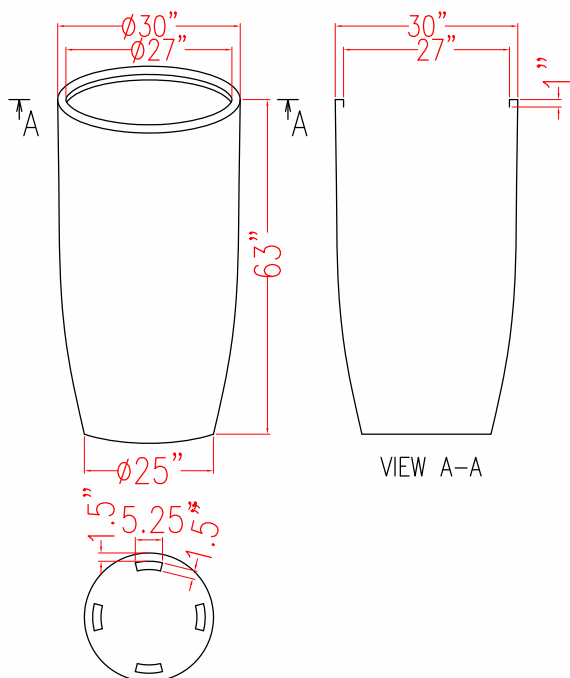
TEGEL 69185



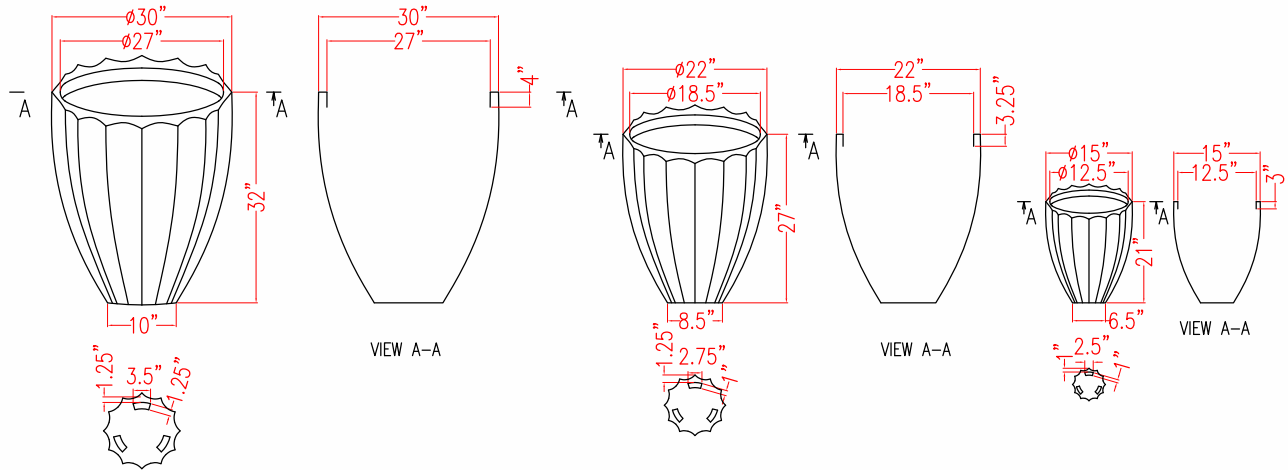
PEYPIN 69110



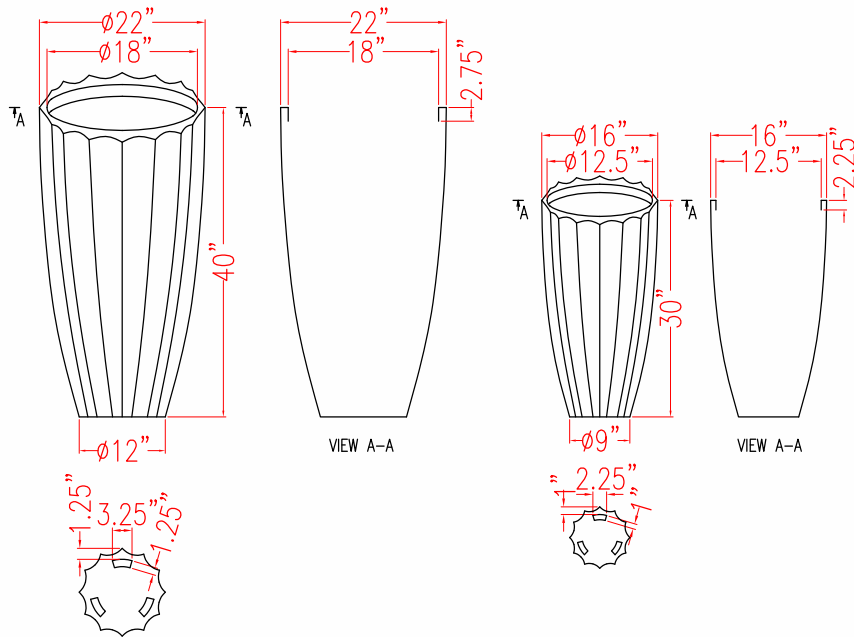
CONGRESS 69900



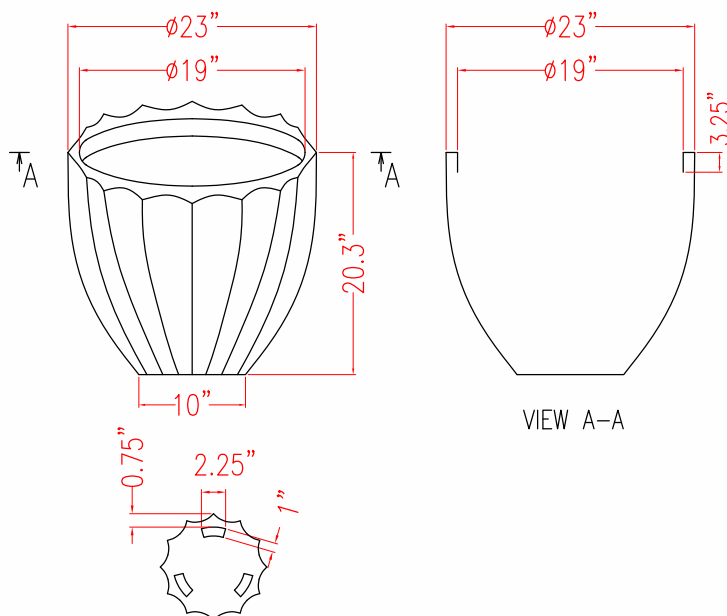
ALICANTE 69468



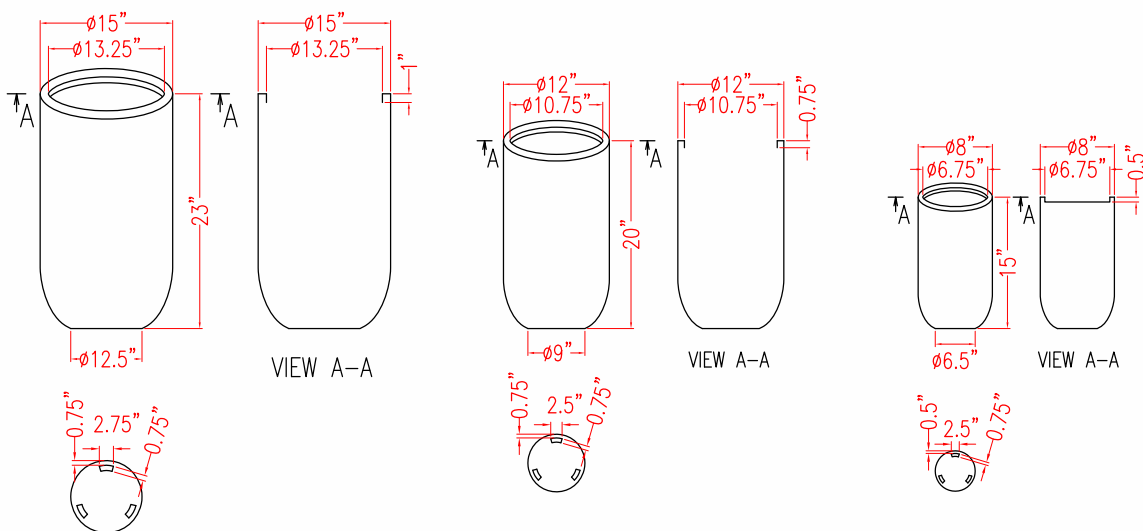
SAN JOSE 69587



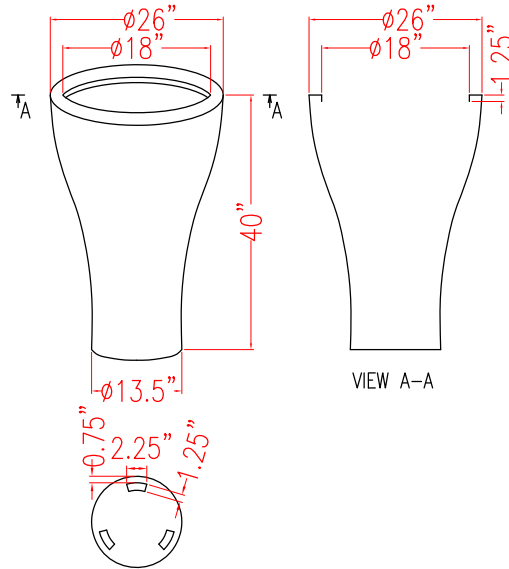
SANTA BARBARA 69561



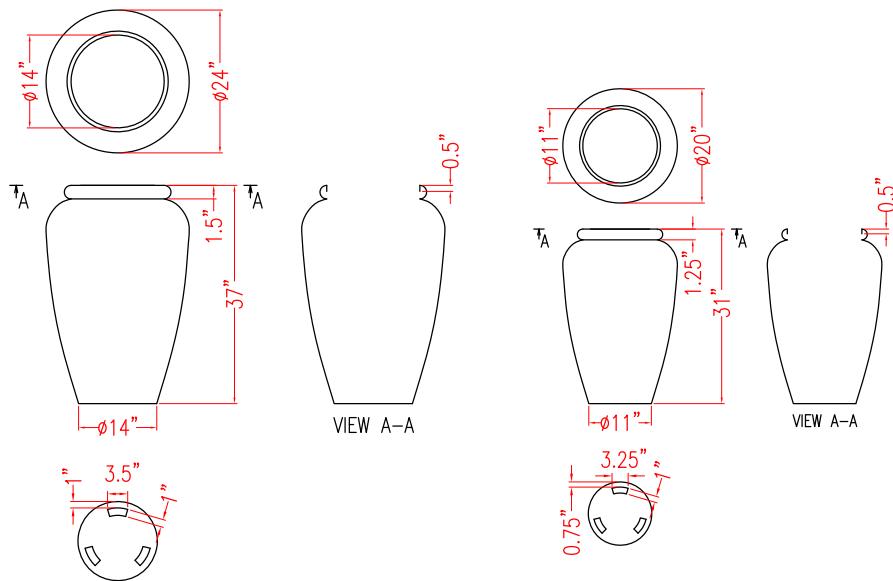
HAYDEN 69015



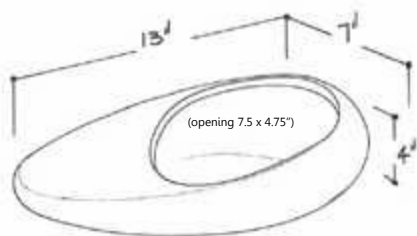
STRASBOURG 69215



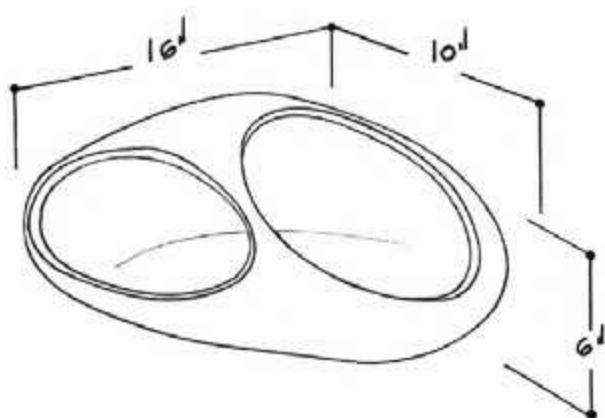
BARÁ JAR 69155



RIVER ROCK SMALL 69817

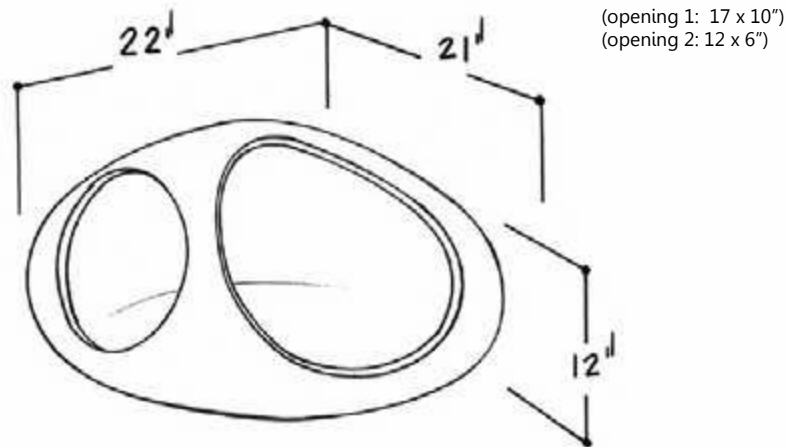


RIVER ROCK MEDIUM 69816

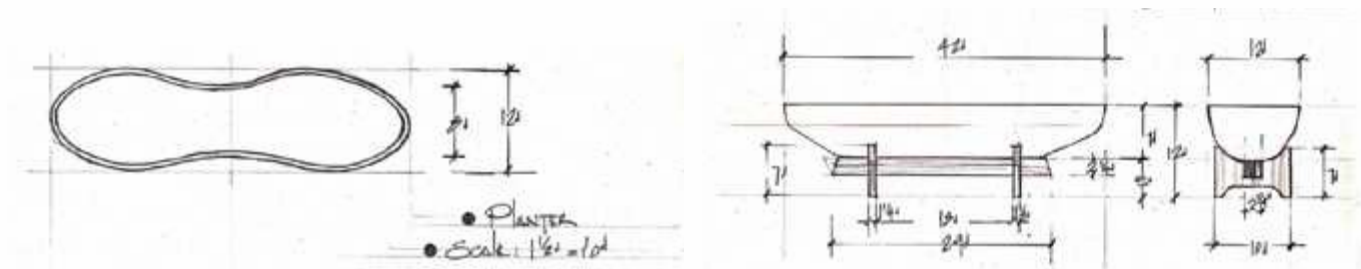


(opening 1: 9.84 x 5.5")
(opening 2: 8.66 x 4.7")

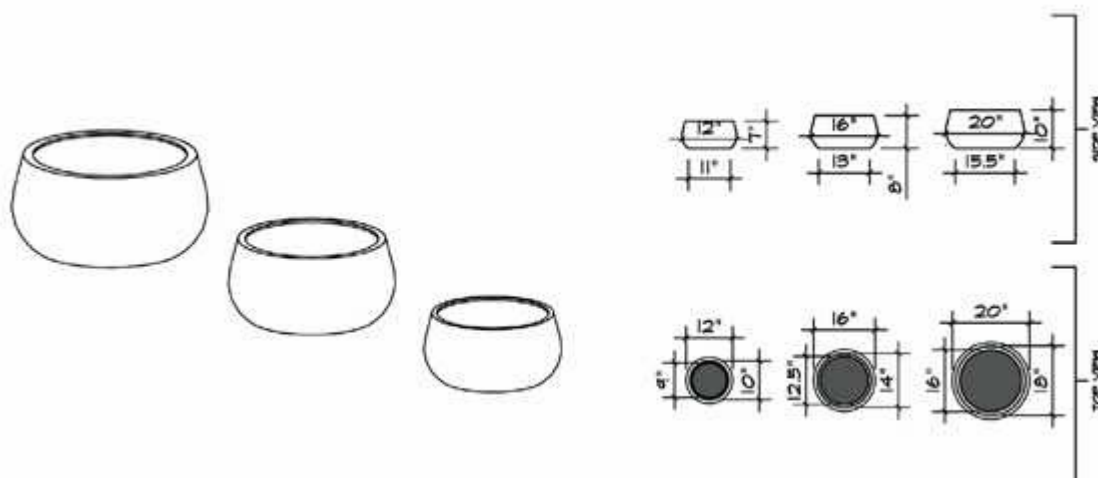
RIVER ROCK LARGE 69815



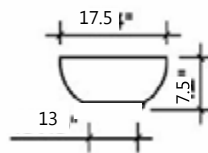
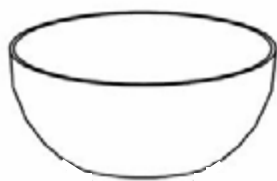
TIMBRELL 31972



SHORT HAYDEN 69117



VIENNA FOCUS BOWL 69464





TABLETOPS



TABLETOPS

ONDARA • 69530



13 x 13 x 5"
19 x 19 x 5"

MALAGA • 69515



11 x 11 x 5"
14 x 14 x 6"

MATARO • 69531



19 x 19 x 5"



READE • 69310



14 x 5 x 4.3"
18.5 x 6.5 x 5"

TONTO • 69418



7 x 7 x 7"

TABLETOPS

TUPELO • 69316

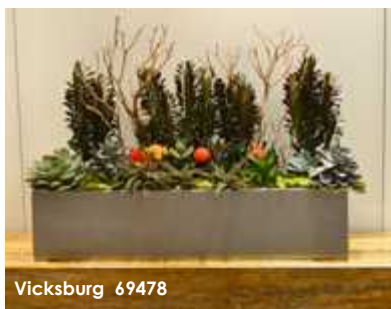


20 x 7 x 7"

WEIR • 69473



26 x 7 x 7"



VICKSBURG • 69478



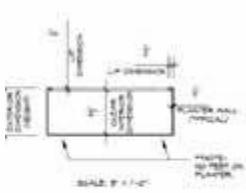
32 x 7 x 7"

WHEELING • 69453

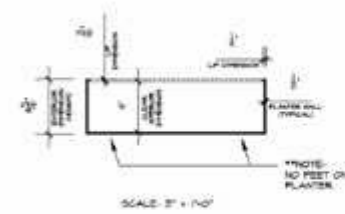
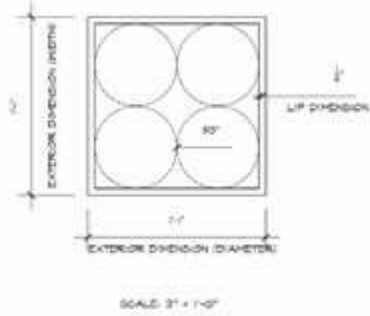


44 x 7 x 7"

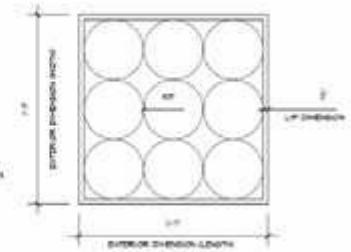
ONDARA 69530



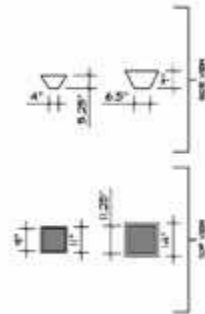
69530.13



69530.19



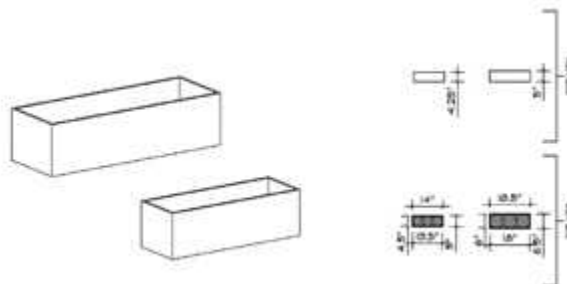
MALAGA 69515



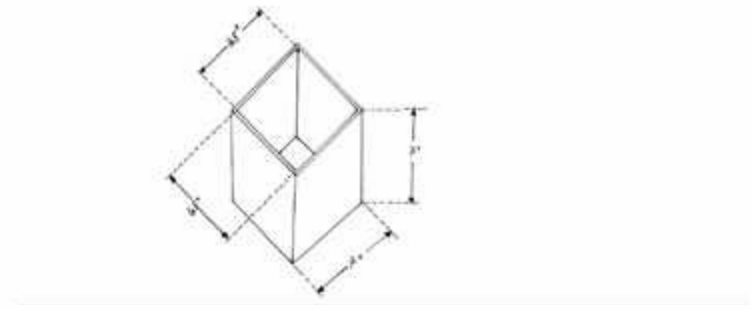
MATARO 69531



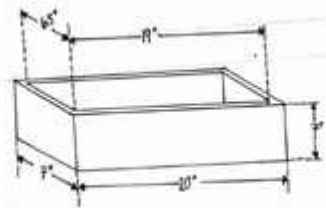
READE 69310



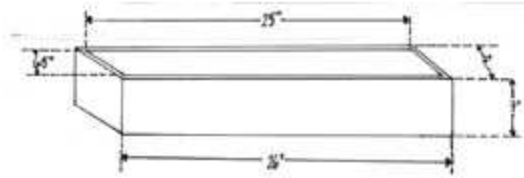
TONTO 69418



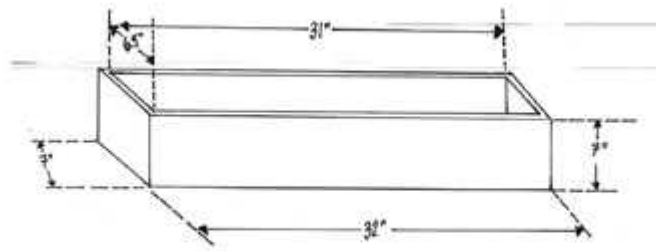
TUPELO 69316



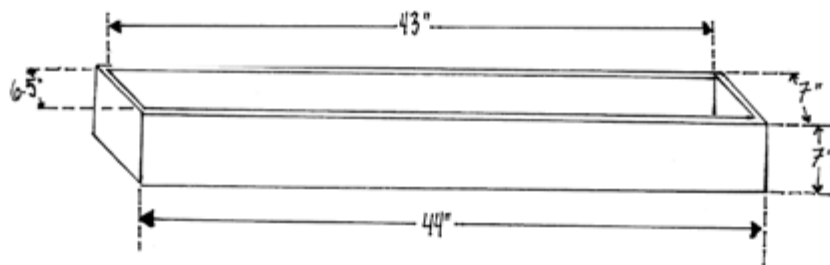
WEIR 69473



VICKSBURG 69478



WHEELING 69531







CARING FOR YOUR PLANTERS

CLEAN



POLISH



MAINTENANCE



JAY SCOTTS FIBERGLASS PLANTERS REQUIRE VERY LITTLE MAINTENANCE TO KEEP THEIR BEAUTY.

CLEAN

Regularly clean your planter with a soft cloth and a mild soap. We recommend dishwashing detergent. Do not use any solutions that contain bleach or are abrasive.

Do not power wash.

Do not clean with steel wool or other abrasives that may scratch your planter.

POLISH

Your fiberglass planter surface is comparable to a boat hull or car. Applying an automotive or marine wax annually will enhance the look of your planter and will help protect the surface, especially in extreme weather climates.

MAINTENANCE

Mild scuff marks and scratches on glossy finishes can often be buffed out. We offer touch up paint kits for nicks and scratches. Call or email us!

QUESTIONS?

We are available to answer your questions. Please call **(905) 361-1368** or email us at: **info@greenvilledesigns.com**



TIME TO PLANT

WE RECOMMEND THAT ALL PLANTERS BE USED WITH A POTTING SOIL MIXTURE.

Potting soil is specially formulated for planter and container gardening and is usually a mixture of soil, hummus and peat, but varies according to mixture. To ensure you are using the correct type of potting soil for your plant(s), check with a professional to determine the correct regional and plant specific soil to be used.

Potting soil can be found at most home improvement or gardening stores and is also available at some craft or hobby stores.

Heavier soil and "earth" absorb and retain more water which can apply strong pressure to the walls of the planter and can cause structural damage in larger planters.



Planters installed outdoors must have drainage holes especially in cold weather climates. During months when temperatures are at freezing or below, water remaining in the soil or planter will freeze and expand which may cause damage to the planter.

WAYS TO PLANT

Our planters are designed to be used without saucers and have feet to allow for water drainage in outdoor applications.

DROP IN YOUR NURSERY POTS

PLEASE NOTE FOR INDOOR USE DRAIN HOLES ARE NOT RECOMMENDED.

Using items such as fillers to bring your plants to the desired height. Place your nursery grow pot in your planter and finish with decorative toppings like stone, gravel or moss.



Saucers are available for select styles.

Check out Page 80 for the complete saucer list.

DIRECTLY IN YOUR PLANTERS



YOU WILL NEED:

- Drill and Drill bit
- Landscaping Fabric
- Sand / Gravel
- Potting Soil



Drainage holes can be drilled in Jay Scotts planters with no adverse effects to the life or performance of the planter. **OUTDOOR APPLICATIONS REQUIRE DRAIN HOLES.**

GREENVILLE WILL DRILL DRAINAGE HOLES FOR A NOMINAL CHARGE PER PLANTER.

- 1.Using a marker, note the locations to guide drilling the holes. We recommend a 1/2" drill bit. A 1/2" hole every square foot with a minimum of 4 holes for any planter in case of blockage.
- 2.Carefully drill through straight through the planter.

PLANTING INSTRUCTIONS:

- 1.Cut out three layers of landscaping fabric slightly larger than the interior dimensions of the planter.
- 2.Place a layer of landscaping fabric inside the planter completely covering the bottom of the planter. Allow the edges of the fabric to rise around the edges of the planter.
- 3.Pour about an inch of sand over the fabric to create a layer and then cover with landscaping fabric.
- 4.Cover the fabric with a layer of gravel. This layer can be up to several inches deep.
- 5.Repeat with another layer of landscaping fabric and gravel.
- 6.Some ways to fill space in larger planters include bags of packing peanuts (keep in bags), blocks of foam, empty water or soda bottles or woodchips are commonly used.
- 7.Pour or scoop a layer of potting soil into the planter. Use enough potting soil to accommodate the roots of your plants.
(NOTE: if you are using a drip irrigation system, insert your tubes before adding potting soil to make them less conspicuous.)
- 8.Once your plants are planted, add potting soil or a topping of your choice (such as small pebbles or moss) to cover the roots of your plants. Consult a professional to determine the type of topping that will suit your plants.



Layers of landscaping fabric, sand and gravel under the soil provide slow drainage allowing water in the planter to be filtered and reduces soil loss through the drainage holes. This will also help to keep plants healthy and prevent root rot.

Lightweight UV Protection Indoor-Outdoor Year-Round Beautiful
DOING BUSINESS WITH US

GREENVILLE DESIGNS TERMS AND CONDITIONS

* Greenville Designs Terms and Conditions may differ from those of the Jay Scotts Company.

WHOLESALE ACCOUNT:

- Contact us with your basic company information at www.greenvilledesigns.com.
Some additional documentation may be required.

PAYMENT:

- Greenville does not offer terms.
- All orders require a minimum 50% deposit to confirm order and start the order process.
- All planter order deposits, whether stock or custom planters, are non-refundable.
- 100% of custom colour fees are non-refundable
- Custom colour order fees are non-refundable.
- Method of payment: Cheque, VISA, MASTERCARD, Interac email transfer or EFT = electronic Funds Transfer
- Returned cheques will incur the maximum processing fee allowed by law.

ORDERS:

- Order confirmation and order processing begins with a successful deposit payment.
This also reserves inventory for your order which is then placed into the finishing queue.
- Order confirmation will be sent out upon receipt of deposit. Customer must review all details including, but not limited to, colour selection, quantity, 'bill to' and 'ship to' addresses as well as any and all tertiary requests (eg. drainage holes).
- Changes to existing orders (including but not limited to quantity, colour, or planter model) must be made in writing, within 24 hours of order placement, to info@greenvilledesigns.com or faxed to 905-361-1369 with acknowledgment and approval received back from Greenville. After 24 hours no changes are possible.

Greenville Planters
Authorized Distributor of the Jay Scotts Collection

greenvilledesigns.com

A Part of WRIAN Marketing Inc.
1295 Kamato Drive
Mississauga, ON L4W 2M2
Fax: 905-361-1369

Tel: 905-361-1368

Greenville Planters

Tel: 905-361-1368 greenvilledesigns.com

CUSTOM PLANTER ORDER:

- Custom planters are accepted at the sole discretion of Greenville Planters and if acceptable, will require a product development/design/mold fee.
- Custom planter designs and molds become the property of Jay Scotts Company unless otherwise agreed to in writing.

SHIPPING:

- Orders are FOB Greenville Planters, Mississauga, Ontario. All shipping charges are passed on to the customer.
- Pick-up available on request
- Order quotes and charges are for commercial dock-to-dock delivery only. Special handling of any kind, including but not limited to: appointments, tailgates, residential, unpacking, placement, etc., will incur additional charges.

DAMAGE:

- Order MUST BE INSPECTED by the customer AT THE TIME OF DELIVERY and any exceptions or damage noted on the bill of lading.
- Damage must be reported in writing immediately to Customer Service at info@greenvilledesigns.com or faxed to 905-361-1369.
- Photos of damage or defect whether to product and/or packaging must be submitted immediately upon date received. Further arrangements will be made at that time after discussion between Greenville and the customer.

RETURN POLICY:

- Greenville Planters does not accept returns unless for damages as noted above. Written authorization must first be received by the customer. Unauthorized shipments will not be accepted.

OTHER IMPORTANT NOTES:

- Planters are not predrilled for drainage. Drainage holes MUST be in place for outdoor placement. Drainage holes may be drilled by Greenville on a charge per planter basis.
- Fiberglass planters should periodically be washed and waxed to maintain their beauty.

Greenville Planters A Part of WRIAN Marketing Inc.

1295 Kamato Drive Mississauga, ON L4W 2M2 Fax: 905-361-1369

RECTANGLES

Page	Name	Item	Exterior	Interior	Shelf	Grow Pot
		RECTANGLE	DIVIDE			
8	Torino	70125.36	36x24x18"	33x21"	N/A	
8	Torino	70125.48	48x24x18"	45x21"	N/A	
8	Granada	70150.36	36x24x24"	33x21"	N/A	
8	Granada	70150.48	48x24x24"	45x21"	N/A	
8	Brisbane	70300.36	36x24x32"	33x21"	N/A	
8	Brisbane	70300.48	48x24x32"	45x21"	N/A	
8	Tolga	69367.36	36x16x24"	33x13"	*Optional	10" (3)
8	Tolga	69367.48	48x16x24"	45x13"	*Optional	10" (4)
8	Tolga	69367.60	60x16x24"	57x13"	*Optional	10" (5)/12"(4)
8	Potsdam	69345.36	36x16x32"	33x13"	*Optional	10" (3)
8	Potsdam	69345.48	48x16x32"	45x13"	*Optional	10" (4)
8	Potsdam	69345.72	72x16x32"	69x13"	*Optional	10" (6)/12"(5)
8	Perth	69050.36	36x16x42"	33x13"	*Optional	10" (3)
8	Perth	69050.48	48x16x42"	43x13"	*Optional	10" (4)
9	Seoul	69370.32	32x12x18/16"	31x11"	N/A	
9	Seoul	69370.36	36x16x24/20"	35x15"	N/A	
9	Seoul	69370.48	48x20x36/30"	47x19"	N/A	
9	Amsterdam Tapered	69615.24	16x10x26"	14.5x8.5"	N/A	6"
9	Amsterdam Tapered	69615.30	20x12x30"	18x8.5"	N/A	8"
9	Panama Tapered	69715	36x12x18"	32.5x8.5"	N/A	8"
9	Milano	69419.24	24x10x24"	21.5x7.5"	*Optional	6"
9	Milano	69419.36	36x10x24"	33.5x7.5"	*Optional	6"
9	Milano	69419.48	48x10x24"	45.5x7.5"	*Optional	6"
9	Amesbury	69729.24	24x10x32"	21.5x7.5"	*Optional	6" (3)
9	Amesbury	69729.36	36x10x32"	33.5x7.5"	*Optional	6" (5)
9	Amesbury	69729.48	48x10x32"	45.5x7.5"	*Optional	6" (7)
9	Hudson	69381.100	100x18x28"	97x15"	N/A	
		RECTANGLE	LOW DIVIDE			
10	Camoux	69213.36	36x8x18"	32.5x4.5"	N/A	
10	Camoux	69213.48	48x8x18"	11.5x4.5"	N/A	
10	Camoux	69213.54	54x8x18"	50x4"	N/A	
10	Salon	69210	42x8x8"	38x4"	N/A	
10	Bonn	69358.45	45x15x8"	42.25x12.25"	N/A	14" (3)
10	Kiel	69013	36x14x12"	33.5x11.5"	N/A	10" (3)
10	Montserrat	69030	48x14x12"	45x11"	N/A	10" (4)
10	Narbonne	69010	65x14x12"	32.25x11.25"	N/A	10" (3)
11	Badalona	69220	39x17x17"	35.5x13.5"	N/A	10" (3)
11	Lyon	69719	48x18x12"	42.25"x15.25"	N/A	14" (3)
11	Tiergarden Railing Planter	69761.36	36x12x10"	33.6x5x9" Per Side	N/A	
11	Antwerp	70100.36	36x24x12"	33x21"	N/A	10" (3)
11	Antwerp	70100.48	48x24x12"	45x21"	N/A	14" (3)
11	Selenge	69497.84	84x36x18"	81x33"	N/A	

*Optional=Sold Separately

CUBES & SQUARES

Page	Name	Item	Exterior	Interior	Shelf	Grow Pot
		SQUARE	TAPERED			
26	Bergen Low Tapered	69825.24	24x24x17"	21x21"	N/A	17"
26	Kathryn Low Tapered	69904.24	24x24x17"	21x21"	N/A	17"
26	Lima Low Tapered	69305.11	12x12x12"	9.5x9.5"	N/A	8"
26	Lima Low Tapered	69305.15	16x16x16"	13.5x13.5"	N/A	12"
26	Lima Low Tapered	69305.19	20x20x20"	16.5x16.5"	N/A	14"
26	Lima Low Tapered	69305.24	24x24x24"	21x21"	N/A	17"
26	Toulan Tall Tapered	69505.11	12x12x22"	10x10"	Included	10"
26	Toulan Tall Tapered	69505.15	16x16x30"	13x13"	Included	12"
26	Toulan Tall Tapered	69505.18	20x20x42"	17x17"	Included	17"
26	Toulan Tall Tapered	69505.23	23x23x48"	20x20"	Included	17"
26	Toulan Tall Tapered	69505.28	28x28x60"	25x25"	Included	24"
26	Toulan Tall Tapered	69505.36	18x18x36"	15x15"	Included	14"
		SQUARE	COLUMN			
27	Britz Tall Square	69160.08	8x8x42"	6.5x6.5"	N/A	6"
27	Britz Tall Square	69160.12	12x12x51"	9.5x9.5"	N/A	8"
27	Britz Tall Square	69160.16	16x16x60"	12.5x12.5"	N/A	12"
27	Santiago Tall Square	69150.12	12x12x24"	9.5x9.5"	N/A	8"
27	Santiago Tall Square	69150.16	16x16x32"	13.5x13.5"	N/A	12"
27	Santiago Tall Square	69150.20	20x20x42"	17.5x17.5"	N/A	17"
27	Sapporo Tall Square	70350.24	24x24x32"	21x21"	N/A	21"
		SQUARE	CUBE			
28	Montroy Cube	69141.12	12x12x12"	10.5x10.5"	N/A	10"
28	Montroy Cube	69141.16	16x16x16"	12.5x12.5"	N/A	12"
28	Montroy Cube	69141.20	20x20x20"	15x15"	N/A	17"
28	Montroy Cube	69141.22	22x22x22"	17.5x17.5"	N/A	17"
28	Montroy Cube	69141.24	24x24x24"	21x21"	N/A	17"/21"
28	Montroy Cube	69141.28	28x28x28"	22.5x22.5"	N/A	21"
28	Montroy Cube	69141.32	32x32x32"	28.5x28.5"	N/A	28"
28	Montroy Cube	69141.36	36x36x36"	32.5x32.5"	N/A	30"
28	Montroy Cube	69141.40	40x40x40"	36.5x36.5"	N/A	36"
28	Montroy Cube	69141.48	48x48x48"	44.5x36.5"	N/A	44"
28	Montroy Cube	69141.60	60x60x60"	56.5x36.5"	N/A	56"

*Optional=Sold Separately

*Dimensions for Rectangles,Cubes & Squares listed as Length x Width x Height. Rounds listed as Diameter x Width.

Contact us today! | (905) 361-1368

The Global Source for Design Innovation

ROUND

Page	Name	Item ROUND	Exterior TAPERED	Interior	Grow Pot
38	Salzburg	69105.15	16x12"	13.5"	12"
38	Salzburg	69105.19	20x15"	16.5"	14"
38	Valencia	69125.15	15x18"	13"	12"
38	Valencia	69125.20	20x23"	16.5"	14"
38	Valencia	69125.27	27x31"	23"	21"
38	Brannan	69600.18	18x29"	14.75"	14"
38	Brannan	69600.35	35x41"	31.75"	30"
38	Alzira	69285.23	23x22"	18.25"	17"
38	Alzira	69285.36	36x34"	32.25"	30"
38	Wannsee	69230.33	33x29"	29"	28"
38	Wannsee	69230.39	39x34"	35"	28/30"
38	Wannsee	69230.44	44x39"	40"	28/30"

		ROUND	BOWL		
39	Casablanca	69790.24	24x12"	20x12"	
39	Casablanca	69790.30	30x15"	26x15"	
39	Casablanca	69790.36	36x18"	32x18"	
39	Marseille	69795.24	24x12"	23.25"	10" (3/4)
39	Marseille	69795.36	36x14"	35.25"	12" (3/4)
39	Tarragona	69415.30	30x20"	27"	24"
39	Shanghai	69460.16	16x14"	13.25"	12"
39	Shanghai	69460.22	21.5x19"	17.25"	17"
39	Niagara Rolled Rim	69135.31	31x16"	25"	
39	Niagara Rolled Rim	69135.39	39x20"	31"	
39	Niagara Rolled Rim	69135.48	48x25"	39"	

		ROUND	SPHERE		
40	Globe	69295.24	24x19"	13"	12"
40	Globe	69295.36	36x30"	17"	14"
40	Spiral Offset Opening	69245	26x26"	19.5"	17"

		ROUND	CYLINDER		
40	Corry Cylinder	69607.20	10x20"	8"	6"
40	Corry Cylinder	69607.30	10x30"	8"	6"
40	Corry Cylinder	69607.36	12x36"	10"	8"
40	Rio Grande Cylinder	69205.18	18x20"	15.75"	14"
40	Rio Grande Cylinder	69205.22	22x22"	18.75"	17"
40	Rio Grande Cylinder	69205.30	30x30"	27.6x32"	

ROUND

Page	Name	Item ROUND	Exterior COLUMN	Interior	Grow Pot
41	Saint Tropez	69626.12	12x32"	10"	10"
41	Saint Tropez	69626.16	16x38"	13.25"	12"
41	Saint Tropez	69626.20	20x43"	17"	17"
41	Lisbon	69121.14	14x25"	11.5"	10"
41	Lisbon	69121.18	18x32"	15.25"	14"
41	Lisbon	69121.24	24x36"	21"	17/21"
41	Pego Oval	69225.18	18x14x26"	16"	14"
41	Pego Oval	69225.22	25.5x22x30"	22.5"	10" (2)
41	Tegel	69185.18	18x26"	15.75"	14"
41	Tegel	69185.22	22x30"	19.5"	17"
41	Peypin	69110	28x48"	24"	24"
41	Congress	69900.30	30x63"	27"	24"

		ROUND	ARCHITECTURAL		
42	Alicante Ribbed	69468.15	15x21"	12.5"	12"
42	Alicante Ribbed	69468.22	22x27"	18.5"	17"
42	Alicante Ribbed	69468.26	26x32"	27"	24"
42	San Jose Ribbed	69587.16	16x30"	12.5"	12"
42	San Jose Ribbed	69587.22	22x40"	18"	17"
42	Santa Barbara Ribbed	69561.23	23x20.3"	19"	17"

		ROUND	CURVES		
42	Hayden	69015.10	8x15"	6.75"	6"
42	Hayden	69015.12	12x20"	10.75"	10"
42	Hayden	69015.15	15x23"	13.25"	12"
42	Strasbourg	69215	26x40"	18"	17"
42	Bará Jar	69155.20	20x31"	11"	10"
42	Bará Jar	69155.24	27x37"	14"	12"

		ROUND	NATURAL FORMS		
43	River Rock Small	69817	13x7x4"		
43	River Rock Medium	69816	16x10x6"		
43	River Rock Large	69815	22x21x12"		
43	Timbrell Planter Stand Not Included	31972	42x12x7"	40x11x6"	
43	Short Hayden	69117.12	12x12x7"	11.5x7"	
43	Short Hayden	69117.16	16x16x8"	14.5x8"	
43	Short Hayden	69170.20	20x20x10"	18x10"	
43	Vienna	69465	17.5x17.5x7.5"		

*Dimensions for Rectangles, Cubes & Squares listed as Length x Width x Height. Rounds listed as Diameter x Width.

Contact us today! | (905) 361-1368

The Global Source for Design Innovation

TABLETOPS

Page	Name	Item ROUND	Exterior TAPERED
62	Ondara	69530.13	13x13x5"
62	Ondara	69530.19	19x19x5"
62	Malaga	69515.11	11x11x5"
62	Malaga	69515.14	14x14x6"
62	Mataro	69531.19	19x19x5"
62	Reade	69310.14	14x5x4.3"
62	Reade	69310.18	18.5x6.5x5"
62	Tonto	69418	7x7x7"
63	Tupelo	69316.20	20x7x7"
63	Weir	69473.26	26x7x7"
63	Vicksburg	69478.32	32x7x7"
63	Wheeling	69453.44	44x7x7"

SAUCERS

Planter	Item #	Dimensions
Alzira	69285.S23	16.5x1.4"
Alzira	69285.S36	20.6x1.4"
Badalona	69220.S	42x20.3x1.4"
Brannan	69600.S18	12x1.4"
Brannan	69600.S35	21.5x1.4"
Hudson	69381.S100	101.5x20x1.6"
Lima	69305.S11	9.4x9.4x1.4"
Lima	69305.S15	11.8x11.8x1.4"
Lima	69305.S19	13.8x13.8x1.4"
Lima	69305.S24	15.9x15.9x1.4"
Lisbon	69121.S14	14.3x1.4"
Lisbon	69121.S18	17.8x1.4"
Lisbon	69121.S24	22x1.4"
Lyon	69719.S	49.6x19.6x1.4"
Marseille	69795.S24	14.7x1.4"
Marseille	69795.S36	18.5x1.4"

SAUCERS

Planter	Item #	Dimensions
Montroy	69141.S12	13.5x13.5x1.4"
Montroy	69141.S16	18.5x18.5x1.4"
Montroy	69141.S20	23x23x1.4"
Montroy	69141.S22	24.2x24.2x1.4"
Montroy	69141.S24	26.5x26.5x1.4"
Montroy	69141.S28	30x30x1.4"
Montroy	69141.S32	34x34x1.4"
Montroy	69141.S36	38x38x1.4"
Montroy	69141.S40	42x42x1.4"
Narbonne	69010.S	66.5x15.5x1.5"
Pego	69225.S18	15.4x12x1.6"
Pego	69225.S22	23x19.5x1.6"
Potsdam	69345.S36	38.5x19x1.4"
Potsdam	69345.S48	50x19x1.4"
Potsdam	69345.S72	74x19x1.4"
Rio Grande	69205.S18	20.8x1.4"
Rio Grande	69205.S22	24.2x1.4"
Saint Tropez	69626.S12	12x1.4"
Saint Tropez	69626.S16	14.8x1.4"
Saint Tropez	69626.S20	19.5x1.45"
Tarragona	69415.S30	12.2x1.4"
Tegel	69185.S18	19.6x1.4"
Tegel	69185.S22	20.8x1.4"
Tolga	69367.S36	38.6x18.8x1.4"
Tolga	69367.S48	50.5x18.5x1.2"
Toulan	69505.S11	11.7x11.7x1.4"
Toulan	69505.S15	14.8x14.8x1.4"
Toulan	69505.S18	18.1x18.1x1.4"
Toulan	69505.S23	22.6x22.6x1.4"
Toulan	69505.S28	26.7x26.7x1.4"
Toulan	69505.S36	17.1x17.1x1.4"
Valencia	69125.S15	13x1.5"
Valencia	69125.S20	15.9x1.4"
Valencia	69125.S27	19.7x1.4"
Wannsee	69230.S33	22.5x1.1"
Wannsee	69230.S39	26.5x1.1"
Wannsee	69230.S44	30x1.1"

*Dimensions for Rectangles, Cubes & Squares listed as Length x Width x Height. Rounds listed as Diameter x Width.

Contact us today! | (905) 361-1368

The Global Source for Design Innovation



Jay Scotts

Warranty Certificate

Jay Scotts Company stands by the quality of our fiberglass manufactured planters. Each planter holds a three (3) year warranty from the time of acceptance of the product. We warrant the initial purchaser of our products that they are of quality material and workmanship, and are free of manufacturing defects.

Jay Scotts Company, at their sole discretion, will repair, exchange or give credit for the original purchase price of any item proving to be of defective materials or workmanship. Mishandling, misuse, abuse, failure to follow directions for use, unauthorized modifications, neglect, accidents or any other hazard to the product voids the three year warranty.

Each planter comes with handling and planting instructions to ensure the longevity of your planter. It is highly encouraged to follow these instructions for the best use of **Jay Scotts planters**. Please note that it is the responsibility of the purchaser to ensure that water be able to drain sufficiently from the containers with outdoor use. This is notably important in regions that are subjected to freezing conditions.

Please note that the **Jay Scotts Company** will not be liable for labor, shipping, delivery or any other costs associated with a claim.

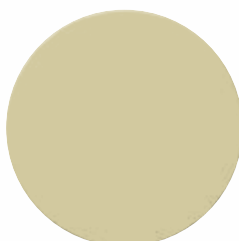
COLOR FINISH OPTIONS



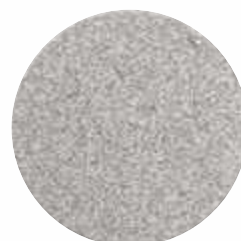
GWH
Gloss White



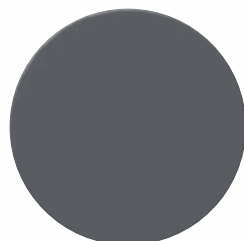
MWH
Matte White



SBE
Satin Beige



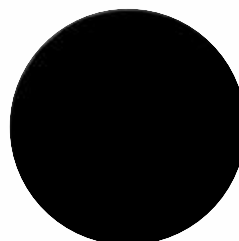
SLV
Metallic Silver



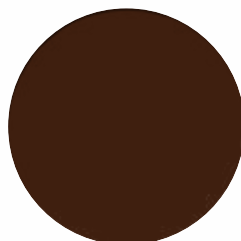
MCH
Matte Charcoal



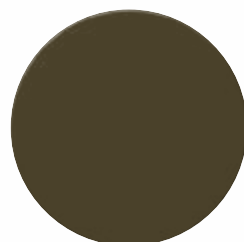
MGM
Matte Gun Metal



MBK
Matte Black



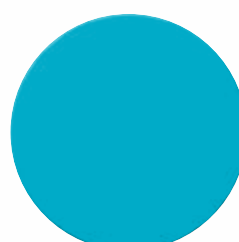
MDB
Matte Brown



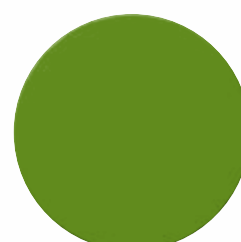
MBZ
Matte Bronze



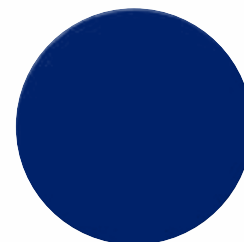
BRZ
Metallic Bronze



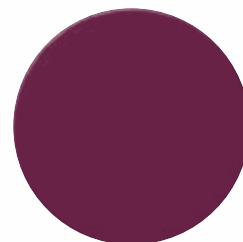
SSG
Satin Sea Foam



SGR
Satin Green



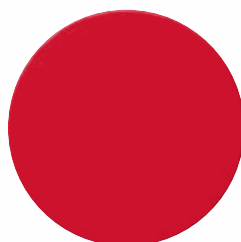
MCB
Matte Cobalt Blue



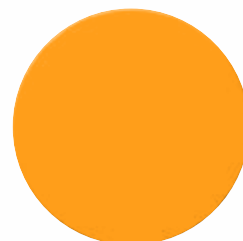
GEG
Gloss Eggplant



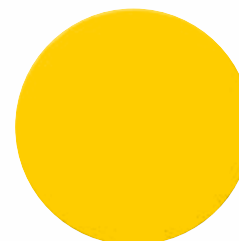
MTC
Matte Terracotta



GRD
Glossy Red



GTG
Gloss Tangerine



GSF
Gloss Saffron

*Custom colors available - call for details. | Tabletops available ONLY in 5 Standard Colors: • Matte Black • Matte White • Matte Charcoal • Matte Dark Brown • Metallic Silver



COMMERCIAL & RESIDENTIAL
LANDSCAPE FIBERGLASS PLANTERS

U.S.A.

Jay Scotts Company
Corporate Office
410 SW 4th Terrace
Dania Beach, FL 33004
T: 954-922-3939
info@jayscotts.com
jayscotts.com

CANADA

Authorized Distributor of the
Jay Scotts Collection
Distributed by: Greenville Planters
WRIAN Marketing Inc.
1295 Kamato Drive
Mississauga, ON L4W 2M2
T: 905-361-1368
info@greenvilledesigns.com
greenvilledesigns.com